

MAASS

MIDWEST™

Model JD Stainless Steel Pitless Adapter

For Monitoring, Remediation, Leachate and Wastewater Piping Applications

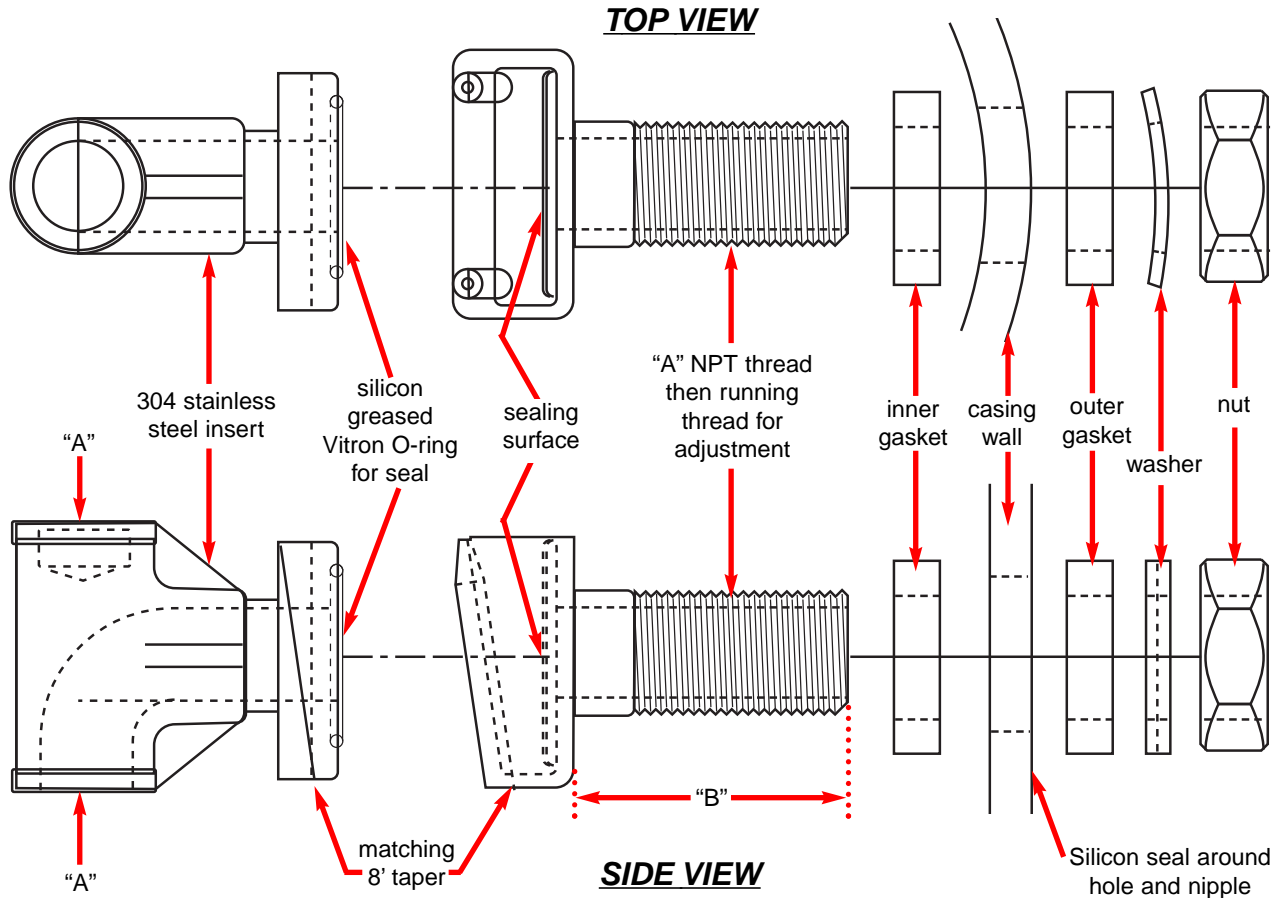
- ◆ 304 stainless steel construction
- ◆ Insert and housing have 8" taper for easy installation and removal.
- ◆ Viton O-ring seal
- ◆ Neoprene or optional Viton gasket for inner and outer casing seal.
- ◆ Extended length nipple on housing with running thread allows adapter to fit from 1/4" to 2" thick wall pipe. Models JS-2SS-6 and JD-3SS-8 fit 1/4" to 1 1/4" thick wall pipe.
- ◆ 1", 1 1/4", 2" or 3" NPT sized fittings for pump pipe, lift-out pipe and discharge pipe.
- ◆ Tube of Silicon seal supplied for seal between inner and outer gaskets.



MADE in the USA



Model	"A"	"B"	Min. Casing I.D.	Max. Pump O.D.	Casing Hole Size
JD-1SS	1" NPT	4"	6"	4"	1 3/8"
JD-1 1/4 SS	1 1/4" NPT	4"	6"	4"	1 3/4"
JD-1 1/2 SS	1 1/2" NPT	4"	6"	4"	2"
JD-2SS	2" NPT	4"	8"	6"	2 1/2"
JD-3SS	3" NPT	5"	10"	6"	3 5/8"
JD-2SS-6	2" NPT	3 1/2"	6"	4"	2 1/2"
JD-3SS-8	3" NPT	4 1/4"	8"	4"	3 5/8"



All examples for illustration purposes only. MAASS MIDWEST is not responsible or liable for damages arising out of, or in connection with, the use or misuse of the information provided herein whether direct, indirect, or consequential. **PATENTED**

©2011, MAASS Midwest Manufacturing, Inc.

MEMBER:

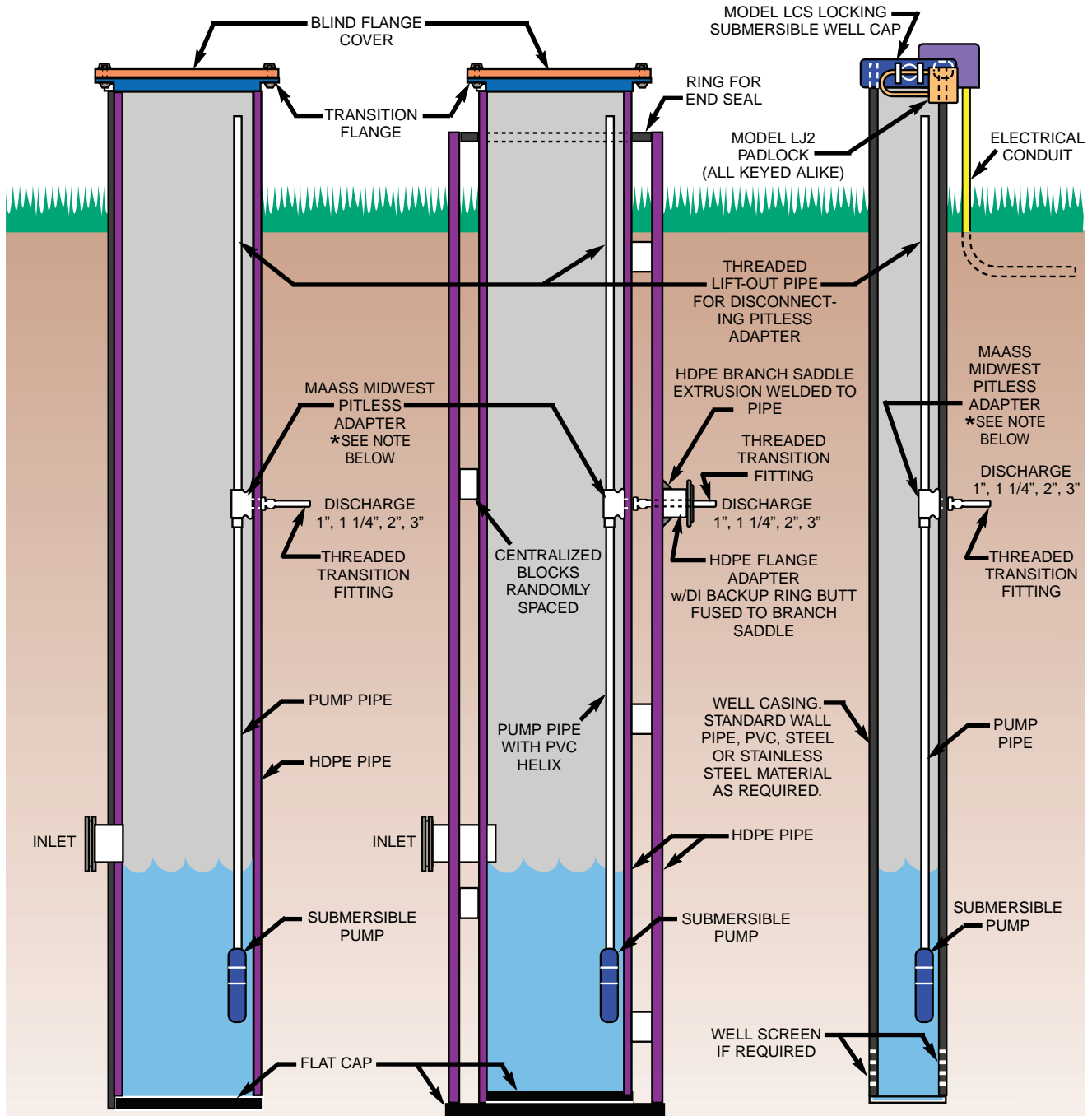


MANUFACTURERS OF QUALITY WATER WELL ACCESSORIES



U.S. & CANADA 1-800-323-6259 • FAX 1-847-669-3230 www.maassmidwest.com

P. O. Box 547, 11283 Dundee Road, Huntley, IL 60142-0547 • (800) 323-6259 • IL AREA (847) 669-5135



*The following Maass Midwest Pitless Adapter models can be used:
 Model 304 JD-SS, Electroless Nickel Plated Models LDS, J or JC - N series (all with Viton O-Rings).

All examples for illustration purposes only. MAASS MIDWEST is not responsible or liable for damages arising out of, or in connection with, the use or misuse of the information provided herein whether direct, indirect, or consequential. **PATENTED**

©2011, MAASS Midwest Manufacturing, Inc.

MEMBER:



MANUFACTURERS OF QUALITY WATER WELL ACCESSORIES



LISTED PAS-97(04)
 PITLESS ADAPTER STANDARD

U.S. & CANADA 1-800-323-6259 • FAX 1-847-669-3230 www.maassmidwest.com

P. O. Box 547, 11283 Dundee Road, Huntley, IL 60142-0547 • (800) 323-6259 • IL AREA (847) 669-5135