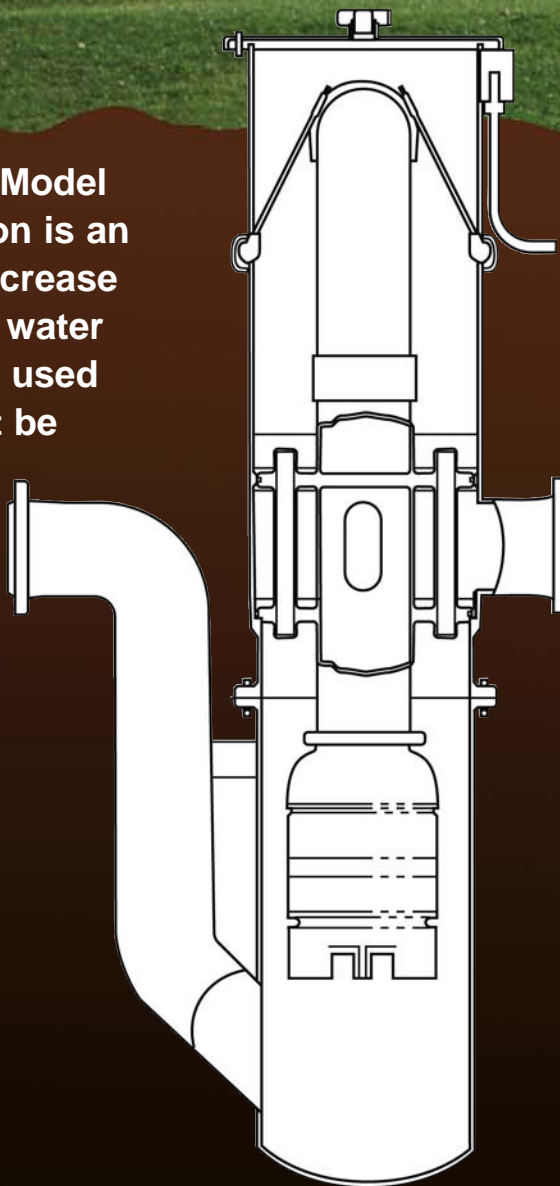


Model MB BOOSTER STATION

The Maass-Baski Model MB Booster Station is an efficient way to increase water pressure in water lines, pipelines or used where fluids must be circulated within a storage vessel.



- *Eliminates above ground construction (No costly vaults or well houses!)*
- *Easily serviced from ground level*
- *FDA and NSF approved coating, buff color*
- *304 Stainless Steel o-ring & spool seats*
- *Unique 304 Stainless Steel wire connections*
- *Made in the U.S.A.*



NSF 61/372

MAASS
MIDWEST

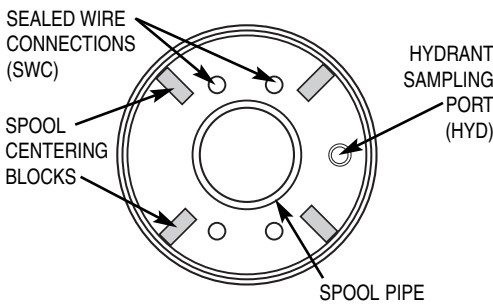
Model MB BOOSTER STATION

The Maass-Baski Model MB Booster Station is an efficient way to increase water pressure in water lines, pipelines or used where fluids must be circulated within a storage vessel.

MODEL MB BOOSTER STATION FEATURES:

1. Heavy Duty Steel Well Cap
2. 304 Stainless Steel rings and seat to defeat rust, corrosion and electrolysis
3. 304 Stainless Steel sealed wire connections
4. O-Rings - 3/8" cross section
5. Spool Centering Blocks prevent damage to O-Rings and seats when setting pump
6. Adjustable hold down hooks
7. Electrical Conduit, 2" NPT Standard

TOP VIEW OF SPOOL PIPE



Reservoir Tank 8" or larger diameter. Booster Station coated internally and externally with FDA and NSF approved catalytic epoxy.

EXAMPLE OF BOOSTER STATION SPECIFICATIONS MB, HD, B-10, 12, 4, F-4, NPT, 4, 1/2, SWC-WT-4-6, F-3/4" HPD

MODEL	HOUSING	SPOOL	CAP	BURY	RESERVOIR	OPTIONS
MB	Type: HD = Heavy Duty ST = Standard Style: B = Booster Station Reservoir Diameter = (8" or larger) Upper Barrel Diameter (2" larger than reservoir is standard) Discharge Diameter Discharge Pipe Type: P = Plain End F = Flanged MT = Male Thread FT = Female Thread Pump Pipe Size = Thread = NPT Sealed Wire Connections = Number, pipe size & SWC		Booster Cap is Water Tight = WT	Bury Depth = Center of Waterline Below Grade	Reservoir Length = Center of Waterline to Bottom of Reservoir Inlet Pipe Diameter Inlet Pipe Type P, F, MT or FT	Hydrant Sampling Port = Pipe size & HYD Check valve is spool = CVS Please describe other options

The Model MB Booster Station gives you a quality, competitive pitless booster unit for your commercial, industrial or municipal submersible pump applications. The MB Booster Station will save you installation and maintenance cost, giving you the competitive edge.

The Model MB pitless Booster Station is easily installed into below grade water lines. No vaults or well houses need to be constructed or maintained. The submersible booster pump is easily serviced from ground level. No excavation or entry into a vault is needed to provide frost-free below ground discharge.

Future well service will be assured with Maass Midwest's use of 304 stainless steel o-ring, spool seats and wire connections.

- **Eliminates above ground construction (No costly vaults or well houses!)**
- **Easily serviced from ground level**
- **FDA and NSF approved coating, buff color**
- **304 Stainless Steel o-ring & spool seats**
- **Unique 304 Stainless Steel wire connections**
- **Made in the U.S.A.**

Booster Pump Stations are available with "all wetted parts" or 100% Stainless Steel by special order. Maass Midwest can also custom design units to meet your specific water system needs. MB pitless units and Line Shaft Turbine Pump units are also available.

OPTIONS:

Inlet and Outlet:
P = Plain end
F = Flanged 150# Steel
MT = Male NPT Thread
FT = Female NPT Thread

SWC = Sealed Wire Connections
CVS = Check Valve in Spool
HYD = Hydrant Sampling Port
LB = Locking Bolts

See Maass Midwest Mfg., Inc.

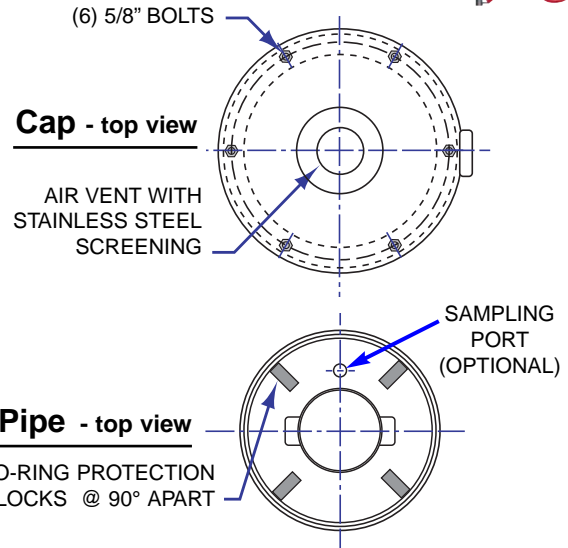
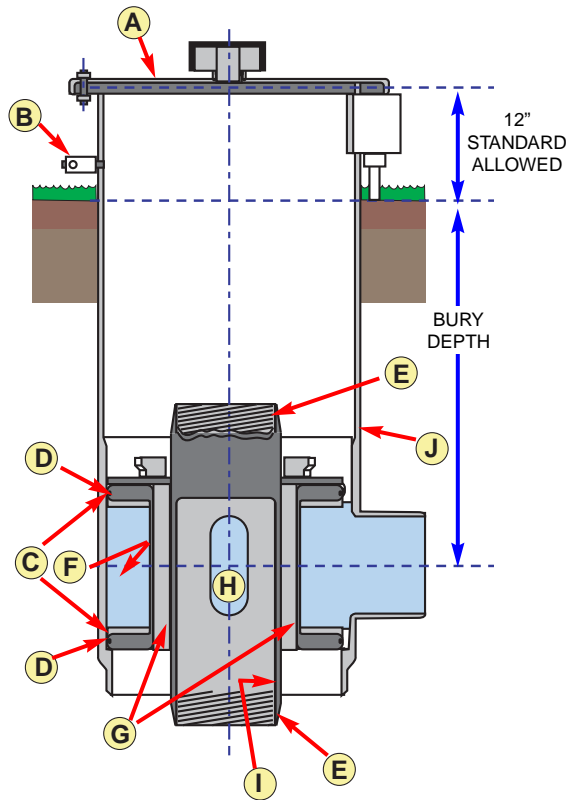


**MANUFACTURERS OF QUALITY
WATER WELL ACCESSORIES**

11283 Dundee Rd • P. O. Box 547
Huntley, IL 60142-0547
Phone: 800-323-6259
IL area 847-669-5135

www.maassmidwest.com

PATENTED



- A. Steel watertight cap shown for Heavy Duty Units.
- B. Airline Test Block - optional.
- C. 304 stainless steel rings and seat.
- D. O-Rings - 3/8" cross section.
- E. Male NPT threads on spool pipe, API threads or flanges optional. (both ends)
- F. Heavy Duty Units have 1/2" or thicker housing wall.
- G. Large access channels. Stainless steel nipples for sealed wire connections, flowing wells, or probes available.
- H. Spool discharge openings 100% or greater than spool pipe used.
- I. Spool Pipe XS wall.
- J. Upper casing barrel 3/8" thick.

OPTIONS:

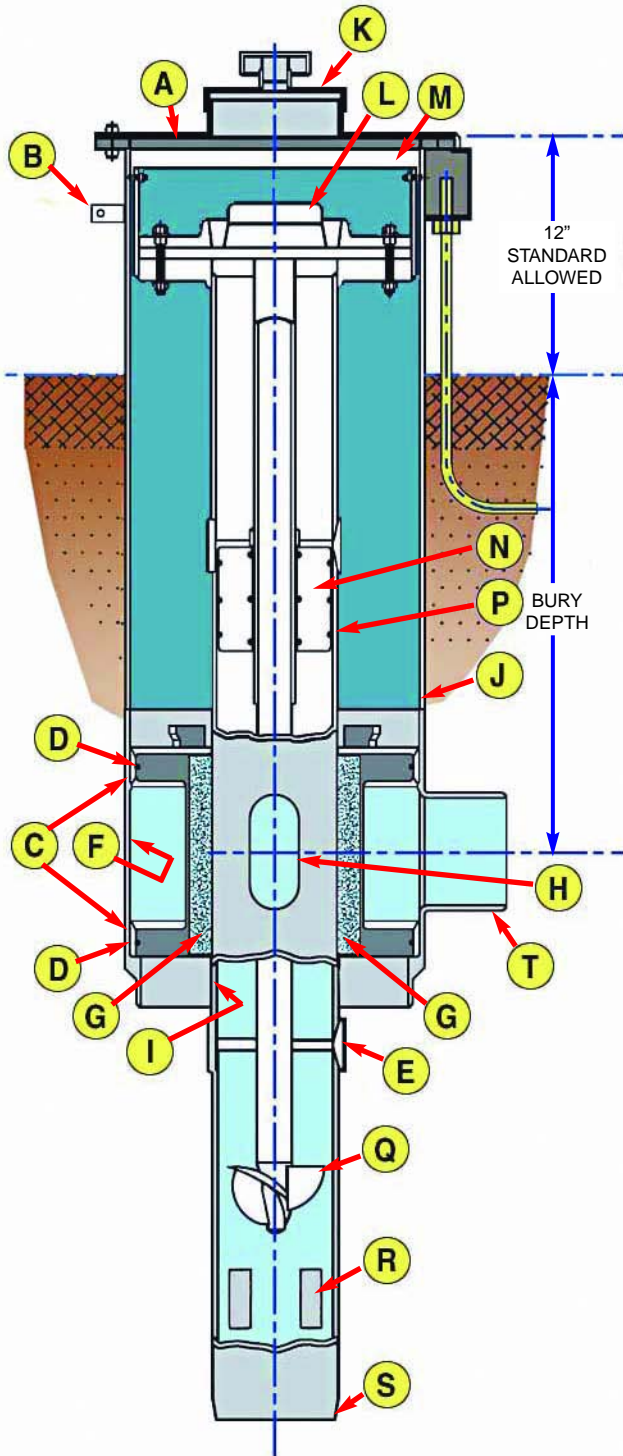
FM = Flow Meter **TA** = Torque Arrestor and Lift-out Bail
ATB = Airline Test Blocks **LOB** = Lift-out Bail only
CVS = Check Valve in Spool **HYD** = Hydrant tapping or sampling port
LB = Locking Bolts **SWC** = Stainless steel nipple

Other options, please describe.

MODEL	HOUSING	SPOOL	CAP	OPTIONS
MB (ST) = Standard (HD) = Heavy Duty	Discharge Diameter (8" - 24") Upper Barrel Diameter (10" - 26")	Discharge Type (MT) = Male Thread (FT) = Female Thread (P) = Plain End (F) = Flanged	WT = Watertight (AL) = Aluminum (WT) = Steel Watertight (AWT) = Aluminum Watertight (AL) = Aluminum Submersible	Bury Depth (if upper casing is ordered) Custom Features (Please describe) (See options)

HOW TO ORDER MB PITLESS UNITS:

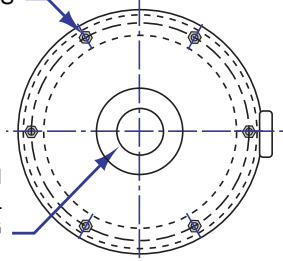
MODEL	HOUSING	SPOOL	CAP	OPTIONS
MB, HD, S	10, 12, 6, P	4, NPT	WT	ATB



(6) 5/8" BOLTS

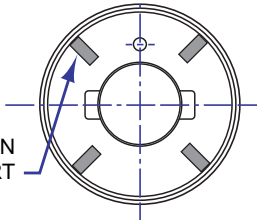
Cap - top view

AIR VENT WITH
STAINLESS STEEL
SCREENING



Spool Pipe - top view

(4) O-RING PROTECTION
BLOCKS @ 90° APART



- A. Steel watertight cap shown for Heavy Duty Units.
- B. Airline Test Block - optional.
- C. 304 stainless steel rings and seat.
- D. O-Rings - 3/8" cross section.
- E. Male NPT threads on spool pipe, API threads or flanges optional. (both ends)
- F. Heavy Duty Units have 1/2" or thicker housing wall.
- G. Large access channels. Stainless steel nipples for sealed wire connections, flowing wells, or probes available.
- H. Spool discharge openings 100% or greater than spool pipe used.
- I. Spool Pipe XS wall.
- J. Upper casing barrel 3/8" thick.
- K. 4" Screw-off Access Cap with stainless steel vent.
- L. Vertical upflow meter with totalizer. Optional indicator totalizer, transmitter and remote read-outs available.
- M. Anti-spin/hold down ring assembly - optional.
- N. Water meter plug with 6 O-rings. Water meter may be removed for service without removing the spool assembly and pump.
- P. 304 stainless steel sleeve.
- Q. Flow meter propeller.
- R. Straightening vanes.
- S. NPT inlet pipe standard. API threads or flanges - optional.
- T. Plain end discharge pipe standard. NPT or API threads or flanges - optional.

©2011, MAASS Midwest Manufacturing, Inc.

MEMBER:

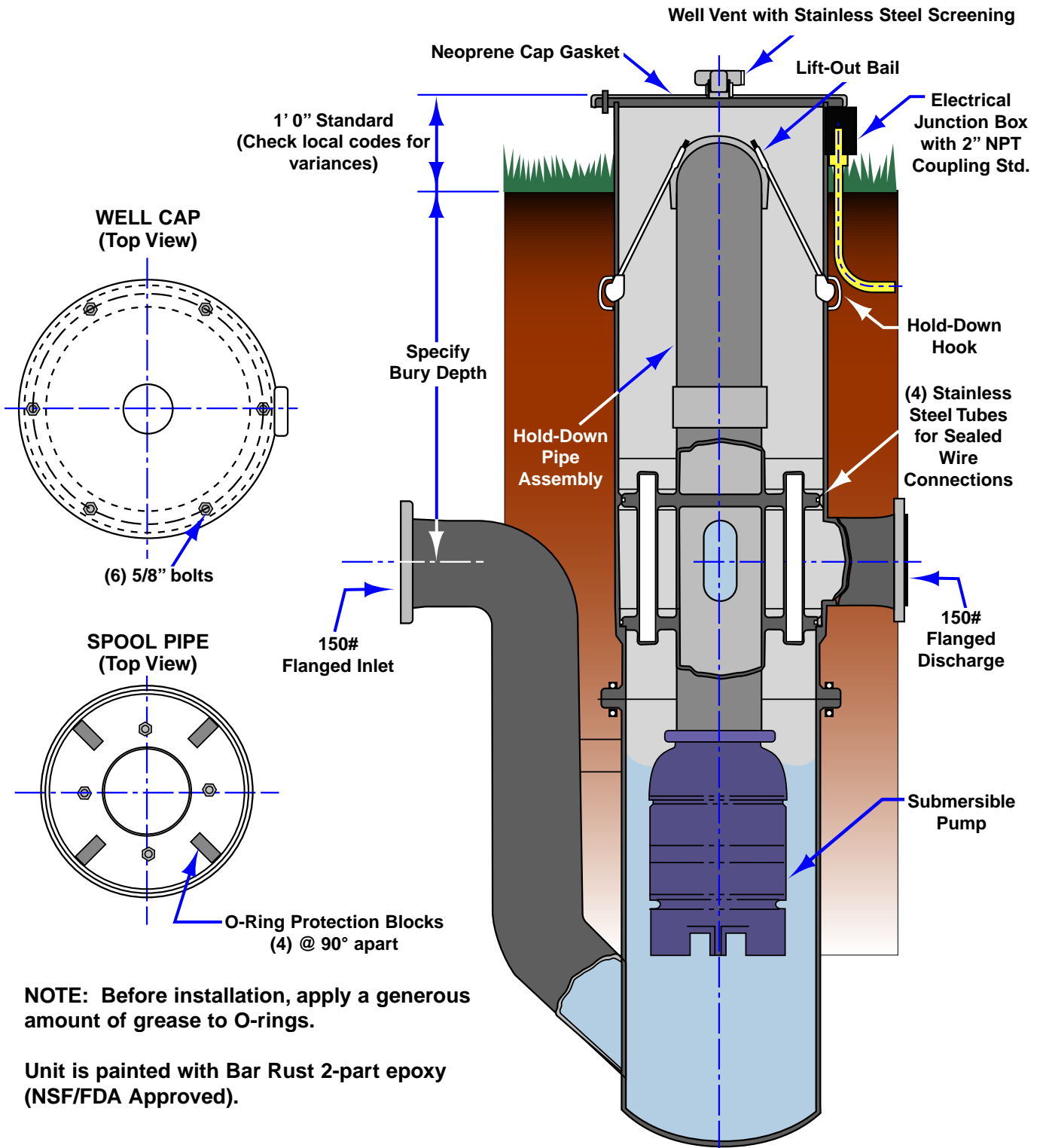


MANUFACTURERS OF QUALITY WATER WELL ACCESSORIES



U.S. & CANADA 1-800-323-6259 • FAX 1-847-669-3230 www.maassmidwest.com

P. O. Box 547, 11283 Dundee Road, Huntley, IL 60142-0547 • (800) 323-6259 • IL AREA (847) 669-5135



NOTE: Before installation, apply a generous amount of grease to O-rings.

Unit is painted with Bar Rust 2-part epoxy (NSF/FDA Approved).

©2011, MAASS Midwest Manufacturing, Inc.

MAASS
MIDWEST **MANUFACTURERS OF QUALITY WATER WELL ACCESSORIES**

MEMBER:



LISTED PAS-97(04)
FITLESS ADAPTER STANDARD

U.S. & CANADA 1-800-323-6259 • FAX 1-847-669-3230 www.maassmidwest.com

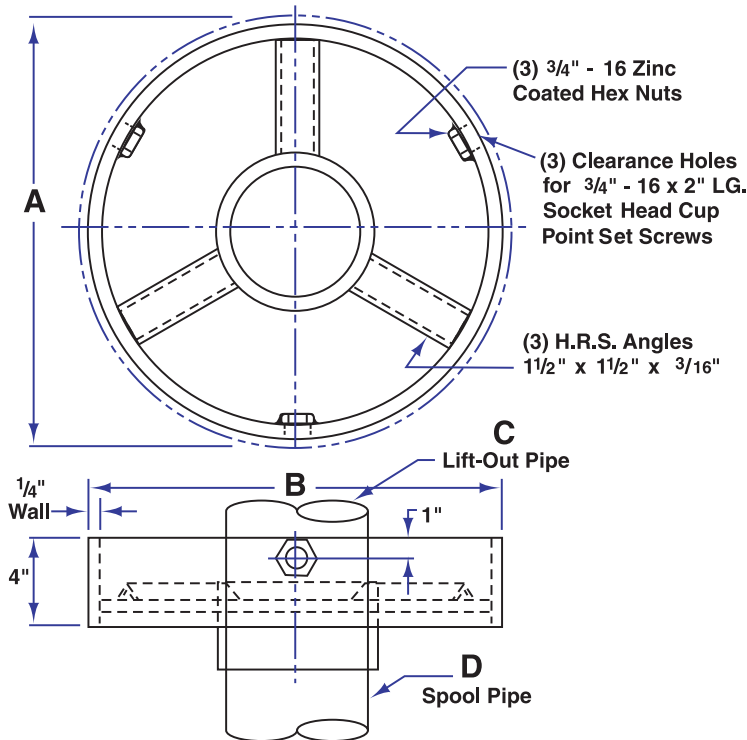
P. O. Box 547, 11283 Dundee Road, Huntley, IL 60142-0547 • (800) 323-6259 • IL AREA (847) 669-5135

MODEL MB TORQUE ARRESTOR

STANDARD SIZES SHOWN, BUT OTHERS SIZES ARE AVAILABLE.

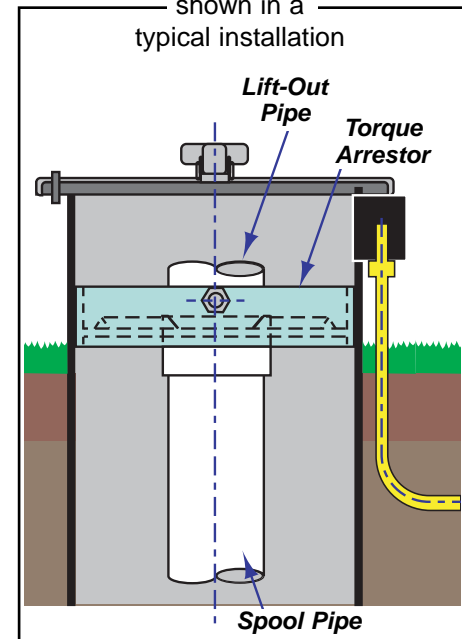
TORQUE ARRESTOR (TA)

For applications where pump torque may cause the pump and adapter spool to rotate within the well. The torque arrestor fits inside the upper barrel just below the electrical junction box and is attached to the top of the spool using a threaded coupling and a LIFT-OUT BAIL (LOB). The lift-out bail facilitates setting of the pump. When the upper barrel is supplied by the factory, the lift-out bail and bail coupling are included with the torque arrestor.



TORQUE ARRESTOR

shown in a typical installation

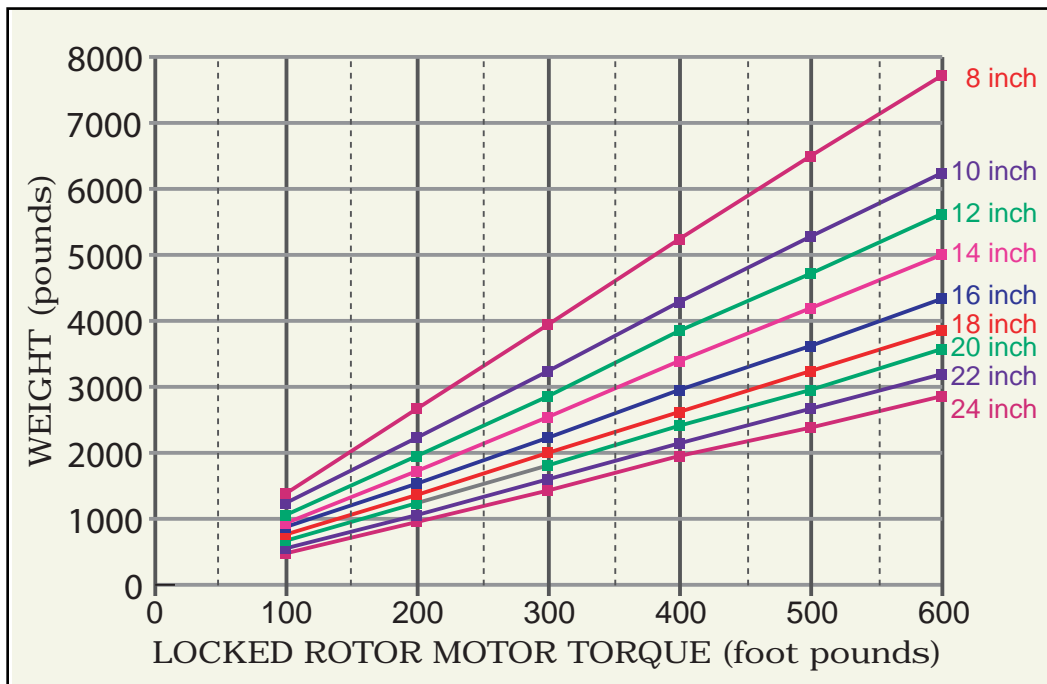


WELL CASING (REF.)	UPPER BARREL OD. (REF.)	UPPER BARREL ID. A	HOLD-DOWN RING OD. B	LIFT-OUT PIPE N.P.T. C	SPOOL PIPE N.P.T. D
8"	10 3/4"	10"	9"	4"	4"
10"	12 3/4"	12"	11"	6"	6"
14"	16"	13 1/4"	12 1/4"	6"	6"
16"	18"	17 1/4"	16 1/4"	6"	6"
18"	20"	19 1/4"	18 1/4"	6"	6"
20"	22"	21 1/4"	20 1/4"	6"	6"
22"	24"	23 1/4"	22 1/4"	6"	6"
24"	26"	25 1/4"	24 1/4"	6"	6"



MIDWEST™

MODEL MB PITLESS ADAPTER TORQUE ARRESTOR CHART



Instructions:

NOTE: In the above chart, "Weight" = the total weight of the motor, pump, wire, adapter and the water column.

1. From the Locked Rotor torque of the motor used, go up to the line for the well casing size.
2. Move left to the vertical "Weight" axis and read the minimum weight required to prevent torsional slipping of the adapter within the well casing.
3. If the system weight is less than the minimum value obtained from the graph, a torque arressor is needed to prevent rotation of the system within the well casing. Otherwise, the pump wires will wrap around the pump pipe.

NOTE: This information is presented as a guide only to assist in determining if a torque arressor is needed. Factors such as different materials for the seat and spool, or foreign materials on the seat, may affect the torsional resistance thus requiring different minimum weight for adequate friction.

MAASS-MIDWEST is not responsible or liable for damages arising out of, or in connection with, the use or misuse of the information provided herein, whether direct, indirect, or consequential.

©2011, MAASS Midwest Manufacturing, Inc.



MANUFACTURERS OF QUALITY WATER WELL ACCESSORIES

U.S. & CANADA 1-800-323-6259 • IL AREA 1-847-669-5135 • FAX 1-847-669-3230
P. O. Box 547, 11283 Dundee Road, Huntley, IL 60142-0547 • www.maassmidwest.com

MEMBER:



LISTED PAS-97(04)
PITLESS ADAPTER STANDARD

During the starting of a submersible pump, the torque developed by the motor must be supported through the pump, delivery pipe or other supports. Most pumps rotate in the direction which causes unscrewing torque on right hand threaded pipe or pump stages. All threaded joints, pumps and other parts of the pump support system must be capable of withstanding the maximum torque repeatedly without loosening or breaking. Unscrewing joints will break the electrical cable and may cause loss of the pump-motor unit.

To safely withstand maximum unscrewing torques with a minimum safety factor of 1.5, tightening all threaded joints to at least 10 lb. ft. per motor horsepower is recommended. It may be necessary to tack weld, strap weld, or set screw pipe joints on high horsepower pumps, especially at shallower settings. On deeper settings, the mass of the pipe and water column will absorb more pump-motor torque.

Motor Horsepower Rating	X 10 Lb. Ft.	Minimum Safe Torque Load
≤1 HP	1 X 10	10 Lb. Ft.
20 HP	20 X 10	200 Lb. Ft.
75 HP	75 X 10	750 Lb. Ft.
200 HP	200 X 10	2,000 Lb. Ft.

Note: This information is presented as a guide only. Other factors may affect the torsional resistance.

MAASS MIDWEST is not responsible or liable for damages arising out of, or in connection with, the use or misuse of the information provided herein, whether direct, indirect or consequential.



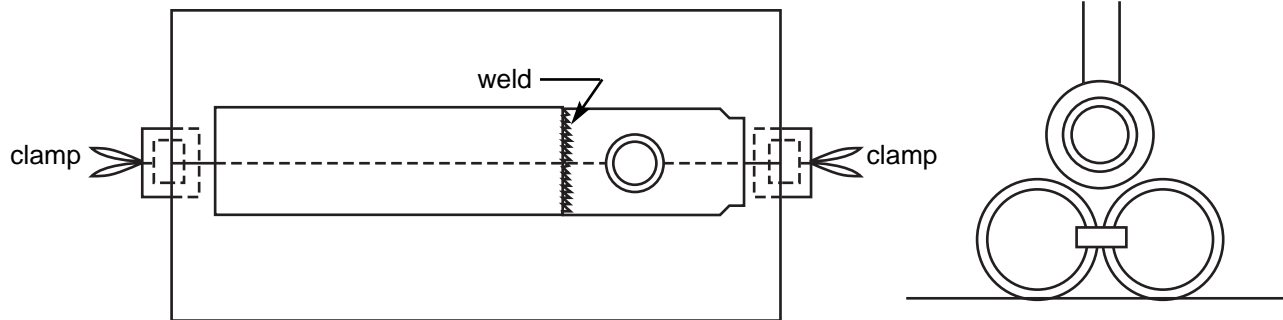
MAASS MIDWEST™ Model MB Pitless Unit Installation Instructions



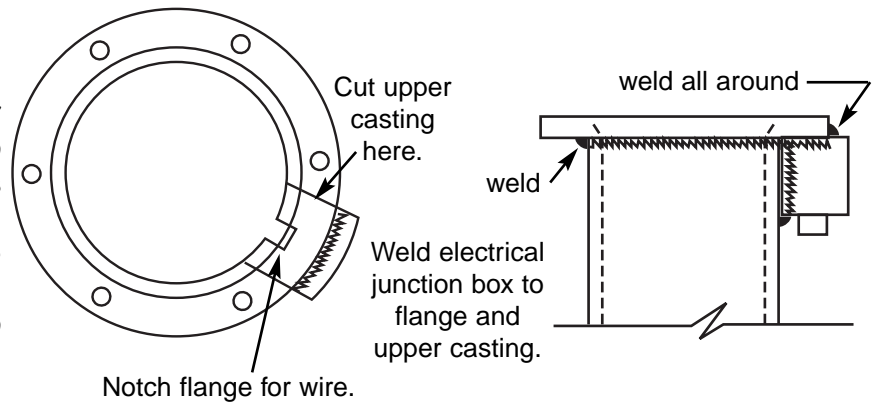
MADE in the USA

INSTALLATION OF UPPER BARREL CASING, WATER TIGHT WELL CAP, AND ELECTRICAL JUNCTION BOX

- A. Align the MB upper casing barrel and the MB housing by laying both pieces on the two lengths of well casing which are clamped together. (See diagram below.)



- B. If, and only if, the unit which is to be installed includes a water tight well cap, mark and cut an opening in the top end of the upper casing barrel for passage of the electrical wires into the electrical junction box. Make this cut where it is convenient for the electrical junction box to be positioned relative to the discharge pipe. Smooth the edges of the cutout to prevent damage to the electrical cables. (See diagram at right.)



- C. Place the flange ring on top of the upper barrel casing. The flange has a machined recess in one side. This should fit over the upper barrel casing. Before welding in place, rotate the flange until the wire notch is centered over the cutout in the barrel for the electrical junction box. Position flange bolt holes so electrical cutout is centered between the two bolt holes to prevent well cap bolts from interfering with electrical junction box. On outside of casing barrel, tack and weld flange to casing.
- D. Position electrical junction box over cutout. Tack and weld completely around the electrical junction box, welding to casing and to underside of flange ring.

Attach Pitless Unit to Well Casing (See reverse side.)

Limited Warranty

All Maass-Midwest pitless adapters are made with finest quality materials and workmanship. Maass-Midwest assumes no liability for improper installation, use, or maintenance of the pitless unit. Maass-Midwest assumes no liability for labor, expenses or losses, consequential, or inconsequential damages in connection with or by reason of defective materials and/or workmanship. Liability shall be limited to the repair and/or replacement of said defective parts. See catalog for complete limited warranty terms.

©2011, MAASS Midwest Manufacturing, Inc.



MANUFACTURERS OF QUALITY WATER WELL ACCESSORIES

U.S. & CANADA 1-800-323-6259 • FAX 1-847-669-3230 www.maassmidwest.com

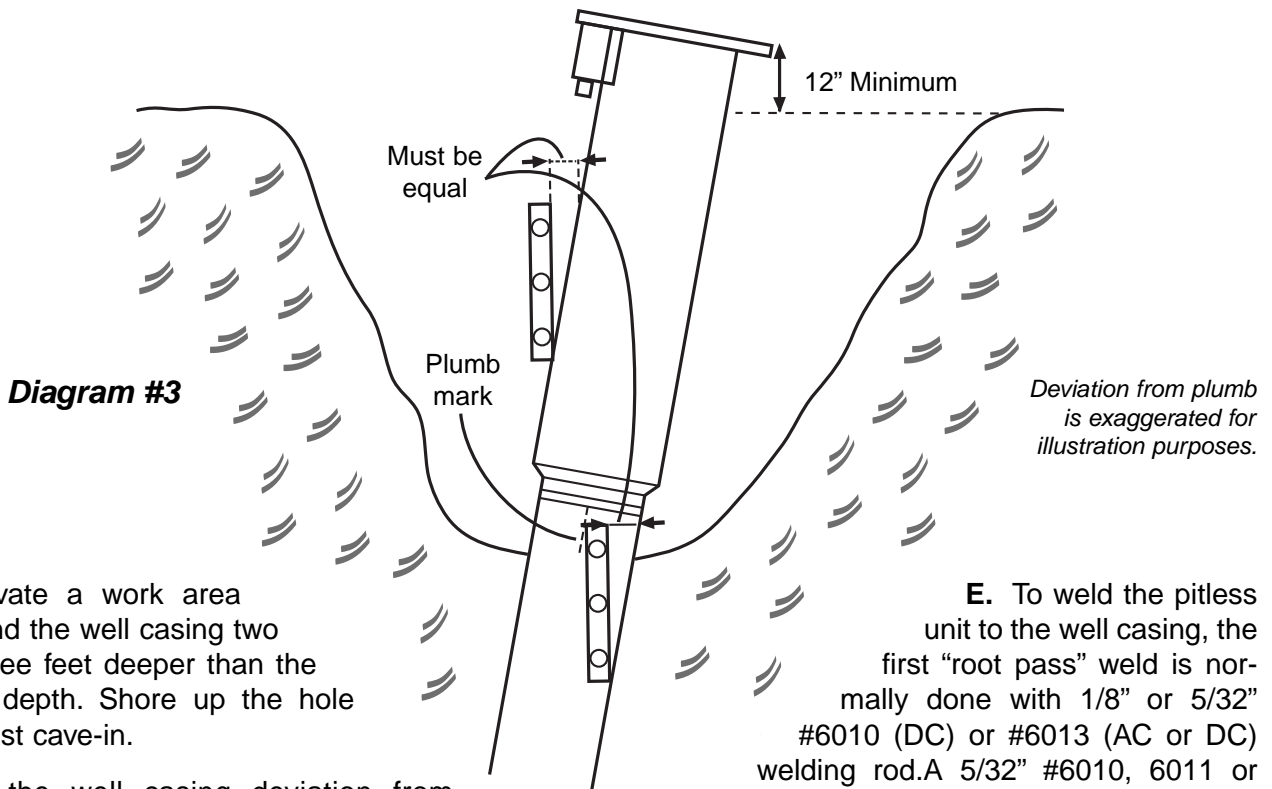
P. O. Box 547, 11283 Dundee Road, Huntley, IL 60142-0547 • (800) 323-6259 • IL AREA (847) 669-5135

MEMBER:



LISTED PAS-97(04)
PITLESS ADAPTER STANDARD

ATTACH PITLESS UNIT TO WELL CASING



- A. Excavate a work area around the well casing two to three feet deeper than the bury depth. Shore up the hole against cave-in.
- B. Find the well casing deviation from plumb. There will be two places on opposite sides of the well casing where the well casing will indicate plumb. Locate and mark these two places on the well casing using a level that is at least four feet long. Then, 90 degrees from your plumb marks, determine the well casing's deviation from plumb. Well casings are out of plumb by typically 1/16 inch to 1/2 inch. Occasionally the casing is perfectly plumb. Only in this case should the pitless unit be installed plumb. (See Diagram #3.)
- C. Cut off well casing so the top of the pitless unit will be at the proper height.
- D. Position the pitless unit over the cut-off well casing. Align the discharge pipe with the water line. Use the level to assure the pitless is plumb in the direction of the two "plumb marks". Tack weld the pitless unit to the well casing at the two "plumb marks". Now tilt the pitless unit until its deviation from plumb equals the casing deviation. This procedure is necessary to prevent the pump pipe from bending and causing stress. Tack weld in several places.
- E. To weld the pitless unit to the well casing, the first "root pass" weld is normally done with 1/8" or 5/32" #6010 (DC) or #6013 (AC or DC) welding rod. A 5/32" #6010, 6011 or 6013 (fast freeze) or #7018 (low hydrogen) may be used on subsequent welding passes. One to three passes are required depending upon conditions.
- F. Prior to seating the spool, cover the O-rings and the stainless steel O-ring seats with the silicone grease provided with the pitless unit. This silicone grease is not water soluble. It provides excellent lubrication and is FDA approved for potable water and food processing applications.
- G. Once the electrical connections are completed, the electrical junction box wire inlet can be sealed with silicone caulking.
- H. Position the well cap gasket and the well cap so all holes are in alignment. Secure the well cap with the bolts and nuts provided. Note: In applications where there are high water tables combined with shallow pump settings, additional weight may have to be applied downward to properly seat the spool.
- I. Backfill the hole around the casing and pitless unit per specifications.

©2011, MAASS Midwest Manufacturing, Inc.



MIDWEST

MANUFACTURERS OF QUALITY WATER WELL ACCESSORIES

U.S. & CANADA 1-800-323-6259 • FAX 1-847-669-3230 www.maassmidwest.com

P. O. Box 547, 11283 Dundee Road, Huntley, IL 60142-0547 • (800) 323-6259 • IL AREA (847) 669-5135

MEMBER:



LISTED PAS-97(04)
PITLESS ADAPTER STANDARD

ALLIED LABORATORIES, LTD.

PHONE 279-0390
AREA CODE 312



716 NORTH IOWA AVENUE, VILLA PARK, ILLINOIS 60181

REPORT NO. 101884-1

LABORATORY REPORT

DATE October 18, 1984

SAMPLE DESCRIPTION

TO [Maass Pitless Adapters]
Div. of Surinak Engr. and Mfg. Inc.
582 W19246 Apollo Drive
Muskego, WI 53150

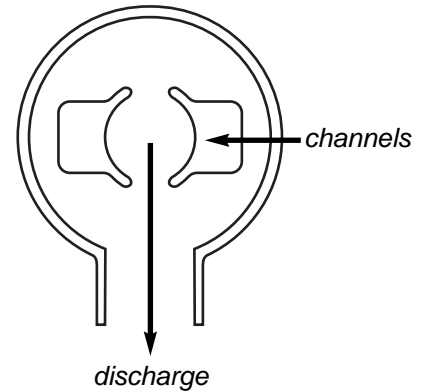
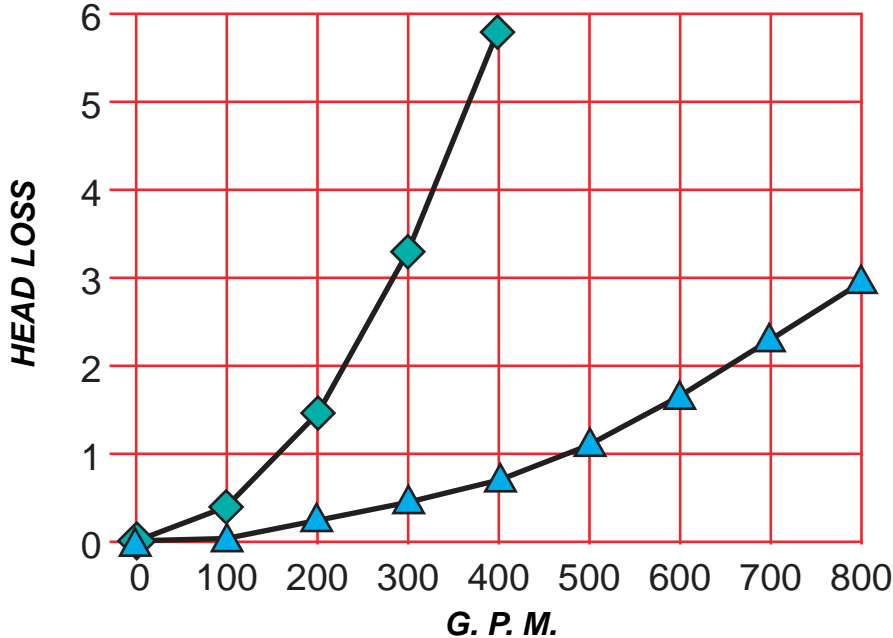
ATTN: John J. Surinak]

RECEIVED

This is to certify that, on October 15, 1984, the following two models of pitless adapters were tested. Both models were subjected to an internal pressure of 350 PSI for thirty minutes. No leakage could be observed in either adapter. Therefore, both models pass the Internal Hydrostatic Test.

1. Model #HB,HD,S-10,12,6,T-6NPT-WT
Description: 10" well casing, 12" upper barrel,
6" discharge, 6" spool pipe
2. Model #MB,HD,S-8,10,4,T-4NPT-WT
Description: 8" well casing, 10" upper barrel,
4" discharge, 4" spool pipe

Irving I. Domskey / I.I.D.
Irving I. Domskey
Laboratory Director



- ◆ Heavy Duty (HD) MB Pitless Unit for 8" well casing with 4" spool and discharge pipes.
- ▲ Heavy Duty (HD) MB Pitless Unit for 12" well casing with 6" spool and discharge pipes.

Head loss calculations are based on spool/discharge alignment as shown above for maximum efficiency (minimum head loss).

NOTE: This information is presented only as a guide to assist in predicting head loss. Factors such as wire channel size, sealed wire connectors, check valves in the spool, air entrapment, modifications, etc. may affect the head loss. MAASS-MIDWEST is not responsible or liable for damages arising from, or in connection with, the use or misuse of the information provided herein, whether direct, indirect, or consequential.

SPECIFICATION OF SUPPLIES

Pitless unit will be a Model MB as manufactured by Maass Midwest Mfg., Inc. or equivalent spool style, with two O-rings sealed against 304 non-magnetic stainless steel seats. The unit is to be coated with an FDA/NSF approved catalytic epoxy paint. The unit will be a heavy duty model for a submersible pump. (_____) inch well casing diameter, (_____) inch discharge, with a (plain end / flanged / male threaded / female threaded) discharge pipe. The pump pipe will be (_____) inch (NPT / APIR) threads. The well cap will be (steel watertight / aluminum watertight) cap with a screened down-turned vent. Pitless Unit shall meet the recommended standard for Water Works, Great Lakes Upper Mississippi River Board of State Public Health and Environmental Managers. (Custom features may be listed as necessary.)

MODEL			HOUSING				SPOOL		CAP		OPTIONS
MB	(HD) = Heavy Duty	(S) = Submersible (B) = Booster Station (T) = Turbine	Casing Diameter (8" - 26")	Upper Barrel Diameter (10" - 28")	Discharge Diameter (2" - 14")	DISCHARGE TYPE		Pump Pipe (2" - 14")	NPT = Thread APIR = API Round	(WT) = Steel Watertight (AWT) = Aluminum Watertight (AL) = Aluminum Submersible	Bury Depth (If upper casing is ordered) Custom Features (Please describe) (See options)
						(MT) = Male Thread (FT) = Female Thread (P) = Plain End (F) = Flanged					

HOW TO ORDER MB PITLESS UNITS:

MODEL	HOUSING	SPOOL	CAP	OPTIONS
MB , HD , S	12 , 14 , 6 , P	6 , NPT	WT	5-ATB

- OPTIONS:**
- FM = Flow Meter
 - ATB = Airline Test Blocks
 - CVS = Check Valve in Spool
 - LB = Locking Bolts
 - TA = Torque Arrestor and Lift-out Bail
 - LOB = Lift-out Bail only
 - HYD = Hydrant tapping or sampling port
 - SWC = Stainless steel nipple
 - CL = Chlorine Adapter
 - Other options, please describe.

Maass MB Pitless Unit Patented

4,298,065 4,416,328 4,531,664

NOTE: Meets recommended standards for Water Works of Great Lakes Upper Mississippi River Board of State Public Health and Environmental Managers.

SPECIFICATION OF SUPPLIES

The Booster Station will be a Model MB as manufactured by Maass Midwest Mfg., Inc. or equivalent spool style, with two O-rings sealed against 304 non-magnetic stainless steel seats. The unit will be a heavy duty model for a submersible pump with (___) inch upper casing diameter, (___) inch discharge and inlet and a (plain end / flanged / male threaded / female threaded) discharge and inlet pipe. The pump pipe will be (___) inch NPT male threads. The well cap will be a (steel watertight / aluminum watertight) vermin resistant cap with a compression gasket seal and screened down-turned vent. Booster Station shall meet the recommended standard for Water Works, Great Lakes Upper Mississippi River Board of State Public Health and Environmental Managers. (Custom features may be listed as necessary.) The spool to is to have (___) 304 stainless steel sealed wire connections (SWC) through the spool, (___) inch diameter, for pump electrical cables and cable seals. The discharge and inlet shall be (___) feet below grade. The reservoir tank is to be constructed of heavy duty steel. The I.D. of the tank to be (___) inches. The length of the reservoir tank to be (___) feet. The Booster Station shall be coated with FDA/NSF Approved Catalytic Epoxy conforming to AWWA C210 standards.

Example of Booster Station Specifications

MB,HD,B-10,12,4,FL-4,NPT-WT-4-(4)1"SWC -CVS -3/4"HYD-6,4,FL

MODEL	HOUSING			SPOOL		CAP	BURY	OPTIONS		RESERVOIR					
MB	Type: HD = Heavy Duty	Style: B = Booster Station	Reservoir Diameter = (8" or larger)	Upper Barrel Diameter = (2" larger than reservoir is standard)	Discharge Diameter	Discharge Type: P = Plain End FL = Flanged MT = Male Thread FT = Female Thread	Pump Pipe Size = Thread = NPT	Sealed Wire Connections = Number, Pipe Size & SWC	Booster Cap is Water Tight = WT Water Tight Aluminum (10" or 12") = AWT	Bury Depth = Center of Waterline Below Grade	Hydrant Sampling Port = Pipe Size & HYD	Check Valve in Spool = CVS Please describe other options	Reservoir Length = Center of Waterline to Bottom of Reservoir	Inlet Pipe Diameter	Inlet Pipe Type: P, FL, MT or FT

Options: Inlet and Outlet

P = Plain End SWC = Sealed Wire Connectors
 FL = Flanged CVS = Check Valves in Spool
 MT = Male NPT Thread HYD = Hydrant Sampling Port
 FT = Female NPT Thread LB = Locking Bolts

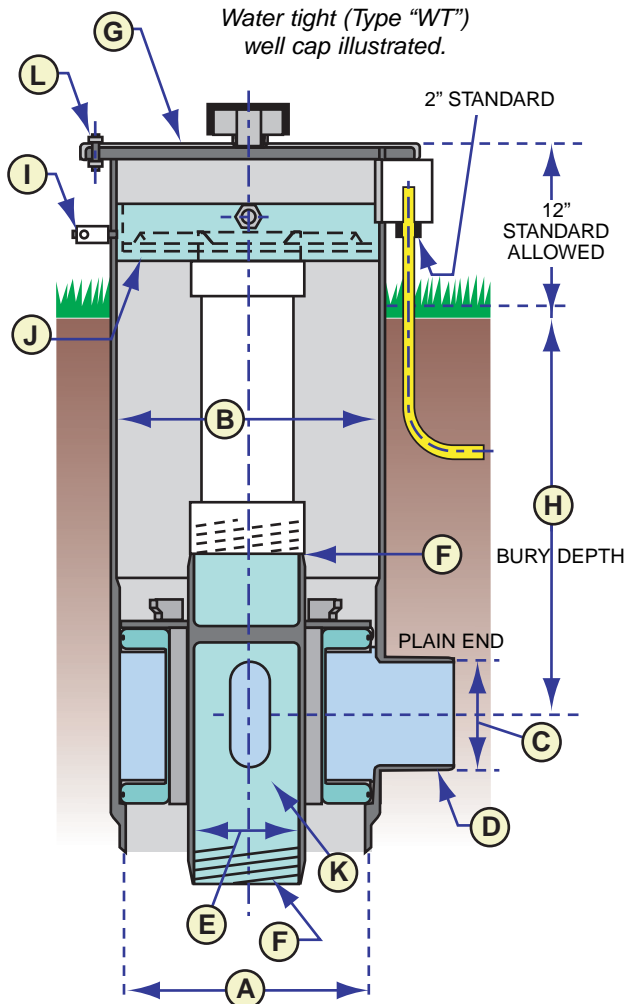
Maass MB Booster Unit Patented

NOTE: Meets recommended standards for Water Works of Great Lakes Upper Mississippi River Board of State Public Health and Environmental Managers.

Date: _____ Quote # _____
 Attention: _____ Fax: _____
 Company: _____ Phone: _____
 City/State/Zip: _____ Reference: _____
 Project: _____

We are pleased to submit for your consideration, a quotation on our Model MB Pitless Unit as described below:

Model No: _____



Heavy Duty (HD) Standard (ST)
 Submersible (S) Other: _____

A. Casing Diameter: _____
 B. Upper Barrel Diameter: _____
 C. Discharge Diameter: _____
 D. Discharge Type: _____
 E. Pump Pipe: _____
 F. Thread: _____
 G. Well Cap: _____
 H. Bury Depth: _____

OPTIONS:

I. Airline Test Block.....(ATB): Yes No
 J. Torque Arrestor *.....(TA): Yes No
 K. Check Valve in Spool(CVS): Yes No
 L. Locking Bolts(LB): Yes No

Other Options: _____

* LIFT-OUT BAIL AND COUPLING ARE NOT INCLUDED WITH TORQUE ARRESTOR - IF KIT IS ORDERED.

Price(each) U.S. Funds. F.O.B. Factory: \$ _____ Signed: _____

Estimated Delivery (A.R.O.): _____ Title: _____

This quotation is valid for 60 days from date shown above.

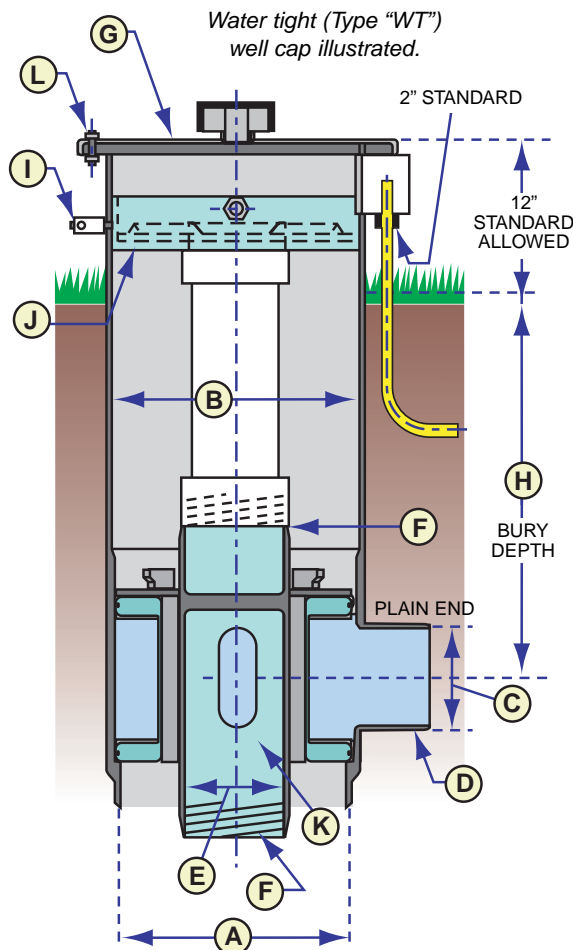
MEMBER:



Date: MARCH 25, 1996 Quote # 032596-1
 Attention: JOHN DOE Fax: 123-456-7890
 Company: XYZ COMPANY Phone: 123-456-7891
 City/State/Zip: SOMEWHERE, ID, 12345 Reference: PHONE CALL 03/24/96
 Project: ABC

We are pleased to submit for your consideration, a quotation on our Model JX1 Pitless Unit as described below:

MODEL	HOUSING	SPOOL	CAP	OPTIONS
MB, HD, S	A, B, C & D below	E & F below	G & H below	I, J, K, L & OTHERS
Model No: MB, HD, S, 10, 12, 6, P	10, 12, 6, P	6, NPT	WT - 5	ATB - TA



- Heavy Duty (HD) Standard (ST)
 Submersible (S) Other _____

- A. Casing Diameter: 10 INCHES
 B. Upper Barrel Diameter: 12 INCHES
 C. Discharge Diameter: 6 INCHES
 D. Discharge Type: PLAIN END (P)
 E. Pump Pipe: 6 INCHES
 F. Thread: NPT
 G. Well Cap: WATERTIGHT (WT)
 H. Bury Depth: 5 FEET

OPTIONS:

- I. Airline Test Block.....(ATB): Yes No
 J. Torque Arrestor*.....(TA): Yes No
 K. Check Valve in Spool(CVS): Yes No
 L. Locking Bolts(LB): Yes No

Other Options: _____

* LIFT-OUT BAIL AND COUPLING ARE NOT INCLUDED WITH TORQUE ARRESTOR - IF KIT IS ORDERED.

Price(each) U.S. Funds. F.O.B. Factory: \$ _____ Signed: _____
 Estimated Delivery (A.R.O.): _____ Title: _____

This quotation is valid for 60 days from date shown above.

MEMBER:

SECURE YOUR WELL!



MAASS

MIDWEST PROTECTIVE WELL ENCLOSURE

For Maass JX1 and Model MB Pitless Units

- Welded air vent with stainless steel screen
- Stainless steel lock pins
- Shielded Locks
- Two lifting eyes on lid
- Detent pins for quick release of unit
- Specify base options: Cemented or Anchor bolt secured mounting base
- Catalytic epoxy coated
- Fits all sizes up to 26" well casing

PUCK LOCK



Additional Security Option for Maass JX1 and Model MB Pitless Units:

MAASS

MIDWEST LOCKING STEEL WELL CAP

- Fits from 8" to 26" well casing

See back side for diagrams and specifications

MADE in the USA 

MAASS
MIDWEST

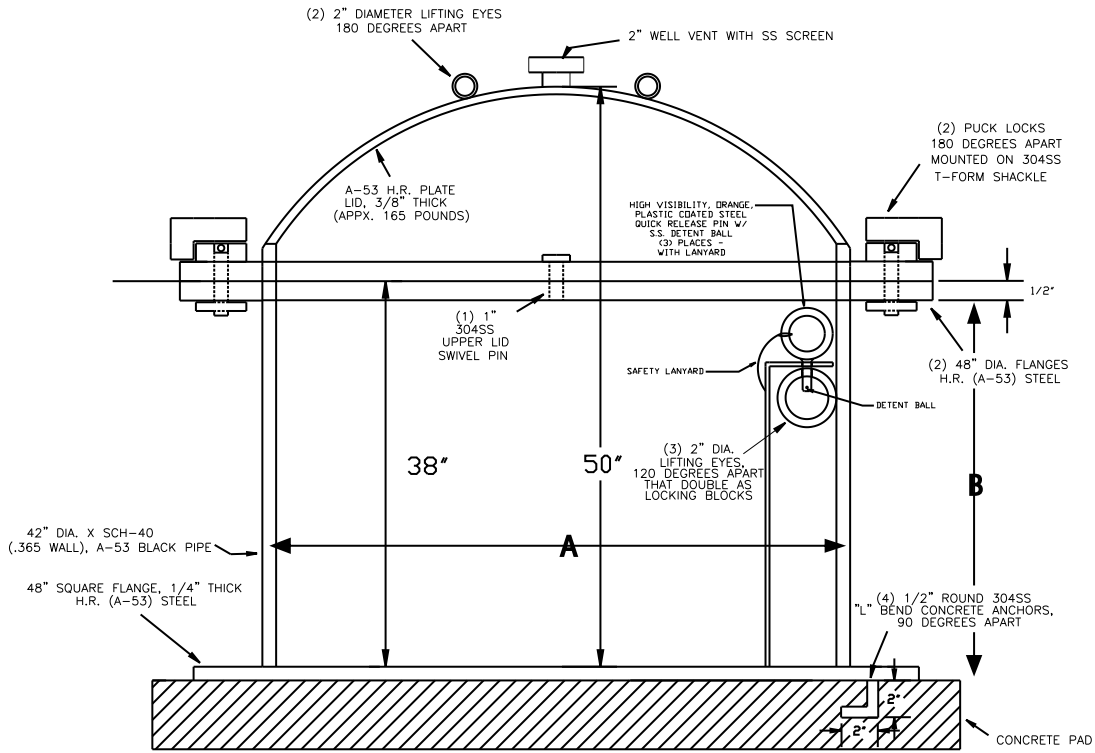
MANUFACTURERS OF QUALITY WATER WELL ACCESSORIES

MEMBER:



U.S. & CANADA 1-800-323-6259 • IL AREA 1-847-669-5135 • FAX 1-847-669-3230
P.O. Box 547, 11283 Old Dundee Road, Huntley, IL 60142-0547 • www.maassmidwest.com

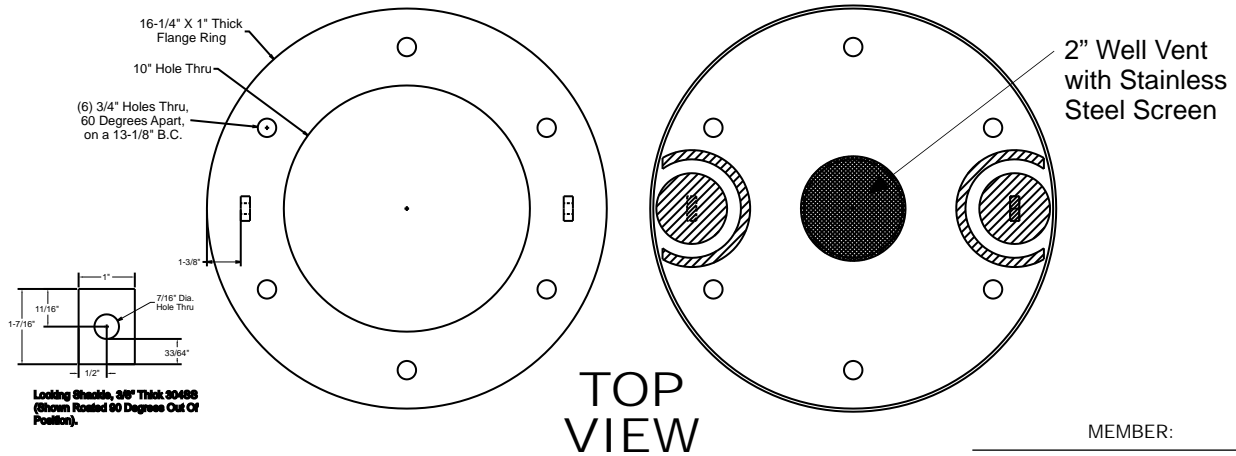
MAASS MIDWEST PROTECTIVE WELL ENCLOSURE



ALL MAASS MIDWEST MB UNITS ARE COATED WITH AN FDA / NSF-61 / AWWA C-210 APPROVED CATALYTIC EPOXY COATING.

PART NUMBER	A" DIM	B" DIM
972630	24"	30"
972635	30"	30"
927640	36"	30"
927645	42"	32"

MAASS MIDWEST LOCKING STEEL WELL CAP



MEMBER:



MANUFACTURERS OF QUALITY WATER WELL ACCESSORIES

U.S. & CANADA 1-800-323-6259 • IL AREA 1-847-669-5135 • FAX 1-847-669-3230
 P.O. Box 547, 11283 Old Dundee Road, Huntley, IL 60142-0547 • www.maassmidwest.com