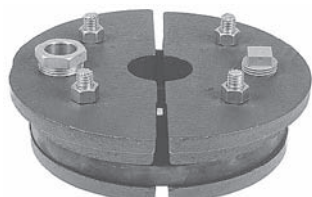


WELL SEALS

SINGLE PIPE WELL SEALS - SPLIT TOP

- Features:
- Split cast iron top for ease of installation
 - Cable seal kit included
 - Vent opening 1/2" NPT
 - 6" seal and above has 1" cable hole



459S

Part Number	Model Number	Size		Hole Location	Weight (Lbs.)	List Price Each
		Casing I.D.	x Drop Pipe			
930647	459S	4 x 1		Offset	3.9	See separate price list
930650	459S	4 x 1 1/4		Offset	3.2	
930656	459S	4 x 2		Offset	2.7	
930713	459S	5 x 1		Center	6.4	
930716	459S	5 x 1 1/4		Center	5.7	
930720	459S	5 x 2		Center	4.9	
930755	459S	5 5/8 x 1		Center	8.1	
930757	459S	5 5/8 x 1 1/4		Center	6.9	
930782	459S	6 x 1		Center	9.9	
930785	459S	6 x 1 1/4		Center	9.7	
930789	459S	6 x 2		Center	7.7	
930809	459S	6 1/4 x 1		Center	7.5	
930811	459S	6 1/4 x 1 1/4		Center	8.1	
930815	459S	6 1/4 x 2		Center	7.8	
930850	459S	8 x 1		Center	17.3	
930852	459S	8 x 1 1/4		Center	17.4	
930856	459S	8 x 2		Center	16.1	
930858	459S	8 x 3		Center	14.1	
930860	459S	8 x 4		Center	11.7	

SINGLE PIPE WELL SEALS - SOLID TOP

- Features:
- One piece cast iron top meets Wisconsin State Code
 - Cable seal kit included
 - Vent opening 1/2" NPT
 - 6" seal has 1" cable hole

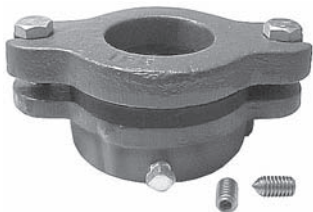


459W

Part Number	Model Number	Size		Hole Location	Weight (Lbs.)	List Price Each
		Casing I.D.	x Drop Pipe			
931259	459W	4 x 1		Offset	3.8	See separate price list
931269	459W	5 x 1		Center	6.5	
931651	459W	6 x 0		None	8.7	
931275	459W	6 x 1		Center	8.6	
931278	459W	6 x 1 1/4		Center	8.5	
931282	459W	6 x 2		Center	7.5	

SINGLE PIPE WELL SEALS

- Features:
- One piece cast iron top
 - Easy disconnect clamp device
 - Provided with optional pointed set screws for threaded pipe



359

Part Number	Model Number	Size		Hole Location	Weight (Lbs.)	List Price Each
		Casing I.D.	x Drop Pipe			
931297	359	2 x 1		Center	2.5	See separate price list
931300	359	2 x 1 1/4		Center	2.3	

DOUBLE PIPE WELL SEALS - SPLIT TOP

- Features:
- Two piece cast iron top



559

Part Number	Model Number	Size		Weight (Lbs.)	List Price Each
		Casing I.D.	x Drop Pipe		
950004	559	4 x 1 1/4 x 1		3.0	See separate price list
950006	559	4 x 1 1/4 x 1 1/4		3.0	
950015	559	5 x 1 1/4 x 1		5.0	
950017	559	5 x 1 1/4 x 1 1/4		5.0	
950031	559	6 x 1 1/4 x 1		9.0	
950033	559	6 x 1 1/4 x 1 1/4		9.0	

WELL SEALS

PACIFIC HYDRO™ STEEL SANITARY WELL SEALS



**Made in
the USA**

Features:

- Made from high strength steel
- Steel plates powder coated for durable finish
- Utilizes soft poly-vinyl packers
- Unique packer design allows for wide range of casing sizes
- Bolts and washers zinc plated
- 1" threaded wire drop hole standard on most well seals
- 1 1/4" threaded wire drop holes can be provided on most large sizes
- Vent opening 1/2" on 4" to 7" well seals
- Vent opening 3/4" on 8" well seals and larger



Part Number	Model Number	Size Casing I.D. x Drop Pipe	Top Plate Thickness	Working Load (Lbs.)	Weight (Lbs.)	List Price Each
954010	WS41	4" to 4 1/4" x 1"	3/16"	2,141	1.80	
954011	WS41.25	4" to 4 1/4" x 1 1/4"	3/16"	2,141	1.76	
954012	WS41.5	4" to 4 1/4" x 1 1/2"	3/16"	2,141	1.65	
954013	WS42	4" to 4 1/4" x 2"	3/16"	2,141	1.55	
954004	WS5OD1	4 1/2" to 4 3/4" x 1"	3/16"	1,520	2.65	
954005	WS5OD1.25	4 1/2" to 4 3/4" x 1 1/4"	3/16"	1,520	2.35	
954006	WS6OD1	5 3/16" to 5 7/16" x 1"	3/16"	1,520	2.90	
954007	WS6OD1.25	5 3/16" to 5 7/16" x 1 1/4"	3/16"	1,520	2.90	
954015	WS51	5" to 5 1/4" x 1"	3/16"	1,524	2.70	
954016	WS51.25	5" to 5 1/4" x 1 1/4"	3/16"	1,492	2.40	
954017	WS51.5	5" to 5 1/4" x 1 1/2"	3/16"	1,489	2.55	
954018	WS52	5" to 5 1/4" x 2"	3/16"	1,128	2.85	
954020	WS61	5 3/4" to 6 1/4" x 1"	3/16"	1,158	3.60	
954021	WS61.25	5 3/4" to 6 1/4" x 1 1/4"	3/16"	1,158	3.60	
954022	WS61.5	5 3/4" to 6 1/4" x 1 1/2"	3/16"	1,111	3.35	
954023	WS62	5 3/4" to 6 1/4" x 2"	3/16"	1,113	3.35	
954024	WS62.5	5 3/4" to 6 1/4" x 2 1/2"	3/8"	9,176	4.70	
954025	WS63	5 3/4" to 6 1/4" x 3"	1/2"	9,176	5.00	
954026	WS6 1/4 x 1	5 3/4" to 6 1/4" x 1"	3/16"	1,158	3.60	See separate price list
954027	WS6 1/4 x 1.25	5 3/4" to 6 1/4" x 1 1/4"	3/16"	1,158	3.60	
954029	WS6 1/4 x 2	5 3/4" to 6 1/4" x 2"	3/16"	1,158	3.35	
954030	WS71	6 5/8" to 7 1/4" x 1"	1/4"	2,160	5.45	
954031	WS71.25	6 5/8" to 7 1/4" x 1 1/4"	1/4"	2,084	5.65	
954032	WS71.5	6 5/8" to 7 1/4" x 1 1/2"	1/4"	2,052	5.40	
954033	WS72	6 5/8" to 7 1/4" x 2"	1/4"	2,025	5.30	
954036	WS81	7 3/4" to 8 1/4" x 1"	1/4"	1,745	7.45	
954037	WS81.25	7 3/4" to 8 1/4" x 1 1/4"	1/4"	1,680	7.30	
954038	WS81.5	7 3/4" to 8 1/4" x 1 1/2"	1/4"	1,649	6.75	
954039	WS82	7 3/4" to 8 1/4" x 2"	1/4"	2,025	6.90	
954040	WS82.5	7 3/4" to 8 1/4" x 2 1/2"	3/8"	6,901	8.35	
954041	WS83	7 3/4" to 8 1/4" x 3"	1/2"	12,120	7.50	
954042	WS84	7 3/4" to 8 1/4" x 4"	5/8"	27,993	9.60	
954045	WS101	9 3/4" to 10 1/4" x 1"	1/4"	1,203	11.75	
954046	WS101.25	9 3/4" to 10 1/4" x 1 1/4"	1/4"	1,158	11.95	
954047	WS101.5	9 3/4" to 10 1/4" x 1 1/2"	3/8"	3,826	15.05	
954048	WS102	9 3/4" to 10 1/4" x 2"	3/8"	3,707	14.70	
954049	WS102.5	9 3/4" to 10 1/4" x 2 1/2"	1/2"	8,626	17.15	
954050	WS103	9 3/4" to 10 1/4" x 3"	5/8"	16,766	19.55	
954051	WS104	9 3/4" to 10 1/4" x 4"	5/8"	17,269	17.65	
954052	WS105	9 3/4" to 10 1/4" x 5"	3/4"	32,185	17.50	
954053	WS106	9 3/4" to 10 1/4" x 6"	3/4"	36,556	15.10	

NOTE: ● Custom sizes available. Contact factory for quotation.
● Also available manufactured from stainless steel.

WELL SEALS

WELL SEALS

PACIFIC HYDRO™ STEEL SANITARY WELL SEALS



Part Number	Model Number	Size Casing I.D. x Drop Pipe	Top Plate Thickness	Working Load (Lbs.)	Weight (Lbs.)	List Price Each
954054	WS121	11 3/4" to 12 1/4" x 1"	1/4"	885	26	See separate price list
954055	WS121.25	11 3/4" to 12 1/4" x 1 1/4"	3/8"	2,878	26	
954056	WS121.5	11 3/4" to 12 1/4" x 1 1/2"	3/8"	2,870	26	
954057	WS122	11 3/4" to 12 1/4" x 2"	1/2"	6,647	26	
954058	WS122.5	11 3/4" to 12 1/4" x 2 1/2"	1/2"	6,600	26	
954059	WS123	11 3/4" to 12 1/4" x 3"	5/8"	12,069	26	
954060	WS124	11 3/4" to 12 1/4" x 4"	5/8"	12,000	26	
954061	WS125	11 3/4" to 12 1/4" x 5"	3/4"	21,560	26	
954062	WS126	11 3/4" to 12 1/4" x 6"	3/4"	21,000	26	
954070	WS141.25	13 1/4" to 14" x 1 1/4"	3/8"	2,281	40	
954071	WS141.5	13 1/4" to 14" x 1 1/2"	1/2"	5,294	49	
954072	WS142	13 1/4" to 14" x 2"	1/2"	5,108	48	
954073	WS142.5	13 1/4" to 14" x 2 1/2"	1/2"	4,869	47	
954074	WS143	13 1/4" to 14" x 3"	5/8"	9,477	54	
954075	WS144	13 1/4" to 14" x 4"	3/4"	16,136	59	
954076	WS145	13 1/4" to 14" x 5"	3/4"	16,325	67	
954077	WS146	13 1/4" to 14" x 6"	1"	40,156	67	
954080	WS164	15 1/4" to 16" x 4"	3/4"	12,568	80	
954081	WS166	15 1/4" to 16" x 6"	1"	30,163	91	

• Custom sizes available. Contact factory for quotation. Also available manufactured from stainless steel.

PACIFIC HYDRO™ STEEL JET WELL SEALS

Part Number	Model Number	Size Casing I.D. x Drop Pipe	Weight (Lbs.)	List Price Each
954100	JS41.75	4" to 4 1/4" x 1" x 3/4"	2	See separate price list
954101	JS41.1	4" to 4 1/4" x 1" x 1"	2	
954102	JS41.25.1	4" to 4 1/4" x 1 1/4" x 1"	2	
954105	JS51.25.1	5" to 5 1/4" x 1 1/4" x 1"	3	
954107	JS51.5.1.25	5" to 5 1/4" x 1 1/2" x 1 1/4"	3	
954110	JS61.1	5 3/4" to 6 1/4" x 1" x 1"	4	
954111	JS61.25.1	5 3/4" to 6 1/4" x 1 1/4" x 1"	4	
954112	JS61.1.251.25	5 3/4" to 6 1/4" x 1 1/4" x 1 1/4"	4	
954114	JS61.5.1	5 3/4" to 6 1/4" x 1/2" x 1"	4	
954116	JS61.5.1.25	5 3/4" to 6 1/4" x 1 1/2" x 1 1/4"	4	
954120	JS71.25.1	6 5/8" to 7 1/4" x 1 1/4" x 1"	5	
954123	JS81.25.1	7 3/4" to 8 1/4" x 1 1/4" x 1"	8	
954124	JS81.25.1.25	7 3/4" to 8 1/4" x 1 1/4" x 1 1/4"	4	
954125	JS81.5.1.25	7 3/4" to 8 1/4" x 1 1/2" x 1 1/4"	8	
954126	JS81.5.1.5	7 3/4" to 8 1/4" x 1 1/2" x 1 1/2"	8	

• Custom sizes available. Contact factory for quotation. Also available manufactured from stainless steel.

PACIFIC HYDRO™ STEEL THICKER TOP PLATE SANITARY WELL SEALS

Part Number	Model Number	Size Casing I.D. x Drop Pipe	Top Plate Thickness	Working Load (Lbs.)	Weight (Lbs.)	List Price Each
954223	WS62	5 3/4" to 6 1/4" x 2"	1/2"	2,600	5.5	See separate price list
954224	WS62.5	5 3/4" to 6 1/4" x 2 1/2"	1/2"	2,300	5.4	
954225	WS63	5 3/4" to 6 1/4" x 3"	5/8"	2,500	5.8	
954239	WS82	7 3/4" to 8 1/4" x 2"	5/8"	2,700	9.0	
954240	WS82.5	7 3/4" to 8 1/4" x 2 1/2"	3/4"	3,700	15.0	
954241	WS83	7 3/4" to 8 1/4" x 3"	3/4"	3,700	12.85	
954242	WS84	7 3/4" to 8 1/4" x 4"	1"	6,775	13.5	
954248	WS102	9 3/4" to 10 1/4" x 2"	5/8"	1,492	18.0	
954249	WS102.5	9 3/4" to 10 1/4" x 2 1/2"	3/4"	3,800	27.4	
954250	WS103	9 3/4" to 10 1/4" x 3"	1"	6,000	25.9	
954259	WS123	11 3/4" to 12 1/4" x 3"	1"	14,700	36.5	
954260	WS124	11 3/4" to 12 1/4" x 4"	1"	15,500	34.2	

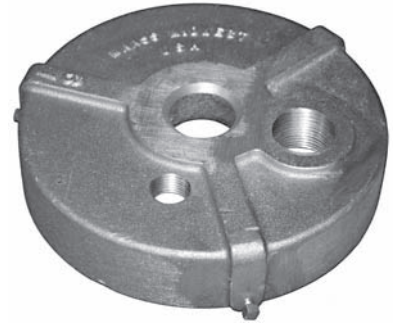
• Custom sizes available. Contact factory for quotation. Also available manufactured from stainless steel.

WELL SEALS

OVER THE TOP ALUMINUM SANITARY WELL SEALS

Features:

- Cast Aluminum Alloy 319 — will not warp or crack
- 3 square head stainless steel cup point set screws
- Seals have 1/2" vent hole as standard
- Machined drop pipe seat with positive Buna-N-Seal



PACIFIC HYDRO™ STEEL SANITARY WELL SEALS

Part Number	Model Number	Size Casing O.D. x Drop Pipe	Cable Hole	Working Load (Lbs.)	Weight (Lbs.)	List Price Each
952640	OTT67.1	6 5/8" -7" x 1"	1"	24,000	3.0	See separate price list
952642	OTT67.1 1/4"	6 5/8" -7" x 1 1/4"	1"	24,000	3.0	
952644	OTT67.1 1/2"	6 5/8" -7" x 1 1/2"	1"	24,000	3.0	
952646	OTT67.2	6 5/8" -7" x 2"	1"	24,000	3.0	
952650	OTT8.1	8 5/8" x 1"	1 1/4"	26,000	5.2	
952652	OTT8.1 1/4"	8 5/8" x 1 1/4"	1 1/4"	26,000	5.2	
952654	OTT8.1 1/2"	8 5/8" x 1 1/2"	1 1/4"	26,000	5.2	
952656	OTT8.2	8 5/8" x 2"	1 1/4"	26,000	5.2	
952657	OTT8.2 1/2"	8 5/8" x 2 1/2"	1 1/4"	26,000	5.1	
952658	OTT8.3	8 5/8" x 3"	1 1/4"	26,000	5.1	
952660	OTT10.1	10 3/4" x 1"	1 1/4"	30,000	8.3	
952662	OTT10.1 1/4"	10 3/4" x 1 1/4"	1 1/4"	30,000	8.3	
952664	OTT10.1 1/2"	10 3/4" x 1 1/2"	1 1/4"	30,000	8.2	
952666	OTT10.2	10 3/4" x 2"	1 1/4"	30,000	8.2	
952668	OTT10.2 1/2"	10 3/4" x 2 1/2"	1 1/4"	30,000	8.1	
952669	OTT10.3	10 3/4" x 3"	1 1/4"	30,000	8.1	

WELL SEALS