

# dicken™ PITLESS ADAPTERS Made in the USA

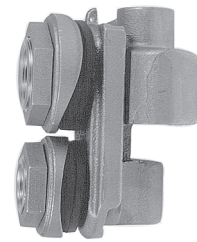
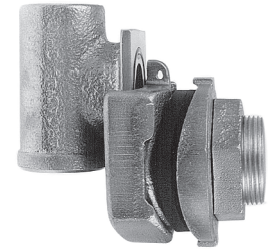


DICKEN PITLESS ADAPTERS

**Features:**

- Precision machined all red brass castings with neoprene O-ring
- Large inner and outer rubber gaskets to seal out surface water contamination
- All Dicken pitless adapters are pressure tested to 150 psi
- Chamfered slide for fast and easy installation
- Wrench grip on ell speeds installation
- A built in lowering eyelet for easier installation
- Water System Council - PAS-97 (04) listed

Part Number	Model	Discharge Supply		Casing Size		Hole Size Required (Inches)	Shipping Weight (lbs-oz.)	Working Load (lbs)	Quantity /Carton
		Pipe (Inches)	Pipe (Inches)	(Inches) I.D.	(Inches) O.D.				
952156	JR-S-10	1	1	4 1/2	to 12	1 5/8	2 lbs. 5 oz.	1500	12
952158	*JR-S-10-P	1	1	4 1/2	to 12	1 5/8	2 lbs. 5 oz.	1500	12
952110	LD-S-10	1	1	5	to 12	1 3/4	4 lbs. 2 oz.	2000	12
952160	*LD-S-10-P	1	1	5	to 12	1 3/4	4 lbs. 3 oz.	2000	12
952112	LD-S-12	1 1/4	1 1/4	5	to 12	2 1/4	5 lbs. 8 oz.	2000	8
952162	*LD-S-12-P	1 1/4	1 1/4	5	to 12	2 1/4	5 lbs. 9 oz.	2000	8
952010	S-10	1	1	5	to 12	1 3/4	5 lbs.13 oz.	5000	8
952012	S-12	1 1/4	1 1/4	5	to 12	2 1/4	8 lbs. 2 oz.	5000	6
952015	S-15	1 1/2	1 1/2	5 3/16	to 12	2 5/8	10 lbs.12 oz.	5000	6
952016	S-15P	1 1/2	1 1/2	5 3/16	to 12	2 5/8	10 lbs.12 oz.	5000	6
952020	S-20	2	2	5 5/8	to 12	3 1/8	14 lbs. 4 oz.	5000	4
952150	LD-2-X upper	1 1/4	1 1/4	4 1/2	to 12	2 1/4	11 lbs. 9 oz.	2000	6
	LD-2-X lower	1	1			1 1/4			

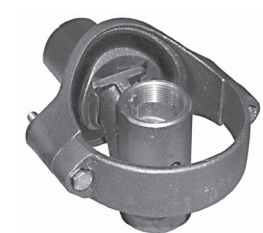


- Pressurized model available for counties and states where required.
- JR-S-10 may be used on 4" casing with 3" pump.
- NOTE: Part Number 952015 Model S-15 not designed for STR17 5" PVC casing.

## CLEARWAY PITLESS ADAPTER Patented

- Features:**
- Simple slip fit insert
  - Easy installation by cutting 2 3/4" hole and clamping on
  - Clamp on units for no obstruction in well casing ID

Part Number	Model	Discharge Supply		Casing Size		Hole Size Required (Inches)	Shipping Weight (lbs-oz.)	Working Load (lbs)	Quantity /Carton
		Pipe (Inches)	Pipe (Inches)	I.D. / O.D.	I.D. / O.D.				
952040	CW-4-10	1	1	4	4 1/2	2 3/4	5 lbs. 1 oz.	2000	6
952050	CW-5-10	1	1	4 1/2	5	2 3/4	5 lbs. 0 oz.	2000	6
952060	CW-6-10	1	1	5 5/8	6	2 3/4	5 lbs. 14 oz.	2000	6
				6	6 5/8				
952045	CW-4-10-WA	1	1	4	4 1/2	2 3/4	6 lbs. 0 oz.	2000	6
952047	CW-4.5-10-WA	1	1	4 1/2	5	2 3/4	6 lbs. 8 oz.	2000	6
952055	CW-5-10-WA	1	1	5	5 9/16	2 3/4	6 lbs. 8 oz.	2000	6
952065	CW-4-12-WA	1 1/4	1 1/4	4	4 1/2	2 3/4	6 lbs. 5 oz.	2000	6
952066	CW-4.5-12-WA	1 1/4	1 1/4	4 1/2	5	2 3/4	6 lbs. 12 oz.	2000	6
952067	CW-5-12-WA	1 1/4	1 1/4	5	5 9/16	2 3/4	6 lbs. 5 oz.	2000	6
952058	CW-6-12-WA	1 1/4	1 1/4	6	6 5/8	2 3/4	6 lbs. 15 oz.	2000	6



- Features:**
- Pressurized for use in Michigan, Illinois
  - Designed for 4" or 5" well casing
  - Fits Schedule 40 through SDR21
  - Unit comes complete with WTCC Michigan/Illinois Approved cap as described on Page 14

Part Number	Model	Discharge Supply		Casing Size		Hole Size Required (Inches)	Shipping Weight (lbs-oz.)	Working Load (lbs)	Quantity /Carton
		Pipe (Inches)	Pipe (Inches)	I.D. / O.D.	I.D. / O.D.				
952075	CW-4-12-WA-25P	1 1/4	1 1/4	4	4 1/2	2 3/4	6 lbs. 5 oz.	2000	6
952076	CW-5-12-WA-25P	1 1/4	1 1/4	5	5 9/16	2 3/4	6 lbs. 5 oz.	2000	8
952077	CW-6-12-WA-25P	1 1/4	1 1/4	6	6 5/8	2 3/4	6 lbs. 15 oz.	2000	6

- Features:**
- Pressurized with WTCC cap

Part Number	Model	Discharge Supply		Casing Size		Shipping Weight (lbs-oz.)	Working Load (lbs)	Quantity /Carton
		Pipe (Inches)	Pipe (Inches)	I.D. / O.D.	I.D. / O.D.			
952043	CW-4-10-WA25P W/4 WTCC CAP	1	1	4	4 1/2	7.3	2000	1
952053	CW-5-10-WA25P W/5 WTCC CAP	1	1	5	5 9/16	9.8	2000	1