

PRESSURE GAUGES

Features:

- Ametek
- With steel case/brass stem, 1/8" orifice



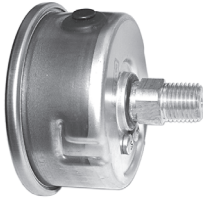
Part Number	Diameter (Inches)	Pressure Range (PSI)	Pressure Connection (Ins.)	Approx. Weight (Lbs.)	List Price Each
940069	2	0-100#	1/4	.4	See separate price list

Features:

- Midwest
- No lead less than .05
- With steel case/brass stem, 1/8" orifice

Part Number	Diameter (Inches)	Pressure Range (PSI)	Pressure Connection (Ins.)	Approx. Weight (Lbs.)	List Price Each
940070	2	0-100#	1/4	.4	See separate price list
940068	2	0-200#	1/4	.4	

BACK MOUNTED GAUGES



Part Number	Diameter (Inches)	Pressure Range (PSI)	Pressure Connection (Ins.)	Approx. Weight (Lbs.)	List Price Each
940071	2	0-100#	1/4	.4	See separate price list
940072	2	0-200#	1/4	.4	

2 1/2" LIQUID FILLED GAUGES

Features:

- Stainless steel case
- Brass stem
- No lead less than .05"
- Liquid filled to reduce vibrations
- Import



Part Number	Model Number	Diameter (Inches)	Pressure Range (PSI)	Pressure Connection (Ins.)	Approx. Weight (Lbs.)	List Price Each
940202	PHLF100	2 1/2	0-100#	1/4	.42	See separate price list
940203	PHLF200	2 1/2	0-200#	1/4	.42	

LIQUID FILLED GAUGES

Features:

- Stainless steel case
- Brass stem
- USA Made



Part Number	Model Number	Diameter (Inches)	Pressure Range (PSI)	Pressure Connection (Ins.)	Approx. Weight (Lbs.)	List Price Each
940204	PGL30	2 1/2	0-30#	1/4	.50	See separate price list
940206	PGL60	2 1/2	0-60#	1/4	.50	
940208	PGL100	2 1/2	0-100#	1/4	.50	
940210	PGL160	2 1/2	0-160#	1/4	.50	
940212	PGL200	2 1/2	0-200#	1/4	.50	
940214	PGL300	2 1/2	0-300#	1/4	.50	
940216	PGL400	2 1/2	0-400#	1/4	.50	
940218	PGL600	2 1/2	0-600#	1/4	.50	
940220	PGL1000	2 1/2	0-1000#	1/4	.50	
940222	PGL60	4	0-60#	1/4	.50	
940224	PGL100	4	0-100#	1/4	1.90	
940226	PGL160	4	0-160#	1/4	1.90	
940228	PGL200	4	0-200#	1/4	1.90	
940230	PGL300	4	0-300#	1/4	1.90	
940232	PGL400	4	0-400#	1/4	1.90	
940234	PGL600	4	0-600#	1/4	1.90	
940236	PGL1000	4	0-1000#	1/4	1.90	

NOTE: Other size pressure gauges on request

PRESSURE GAUGES

2 1/2" LIQUID FILLED BACK MOUNTED GAUGES

Features:

- No lead less than .05
- Liquid filled to reduce vibrations
- Stainless steel case
- Import

Part Number	Diameter (Inches)	Pressure Range (PSI)	Pressure Connection (Ins.)	Approx. Weight (Lbs.)	List Price Each
940073	2 1/2	0-100#	1/4	.45	See separate price list
940074	2 1/2	0-200#	1/4	.45	

2 1/2" LIQUID FILLED BACK MOUNTED GAUGES

Features:

- Stainless steel case
- Brass stem
- USA made

Part Number	Model Number	Diameter (Inches)	Pressure Range (PSI)	Pressure Connection (Ins.)	Approx. Weight (Lbs.)	List Price Each
940255	PGL30	2 1/2	0-30#	1/4	.50	See separate price list
940256	PGL60	2 1/2	0-60#	1/4	.50	
940257	PGL100	2 1/2	0-100#	1/4	.50	
940259	PGL200	2 1/2	0-200#	1/4	.50	
940260	PGL300	2 1/2	0-300#	1/4	.50	
940261	PGL400	2 1/2	0-400#	1/4	.50	
940263	PGL1000	2 1/2	0-1000#	1/4	.50	



2 1/2" LIQUID FILLED VACUUM GAUGES

Features:

- Stainless steel case
- 1/4" bottom

Part Number	Model Number	Description	List Price Each
940250	PGL-30	25.901 -30/+30 PSI	See separate price list

4 1/2" WATER LEVEL GAUGE

Features:

- Used in conjunction with airline
- Adjustable dial to permit reading water level in feet
- Steel case
- Phosphor bronze bourbon tube

Part Number	Model	Depth Range	Connection (Inches)	Approx. Weight (Lbs.)	List Price Each
940238	CA566	0-390 ft.	1/4	2.0	See separate price list



GAUGE PANEL MOUNTING CLAMP

Part Number	Description	List Price Each
940242	Designed for back connecting gauges	See separate price list



NOTE: Other size pressure gauges on request