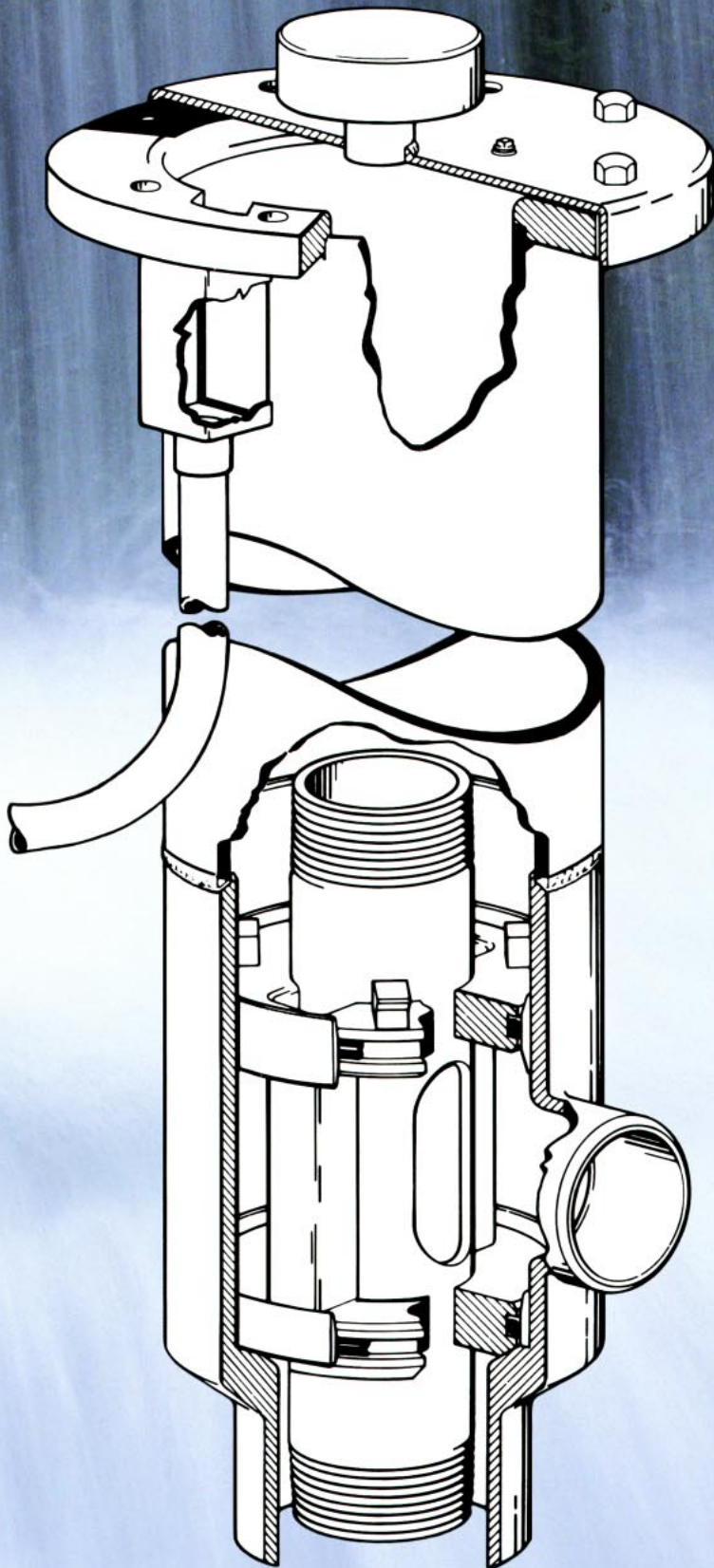


MAASS™ MODEL MB PITLESS UNIT



The Model MB pitless units are spool-type adapters with flexible design concepts for quick delivery and ease of installation.

- ✓ *Designed for ease in setting and servicing pumps.*
- ✓ *Rugged construction with 304 stainless steel O-ring and spool seats.*
- ✓ *Durable FDA and NSF approved coating for protection.*
- ✓ *Available as a complete bury unit or in "kit" form.*



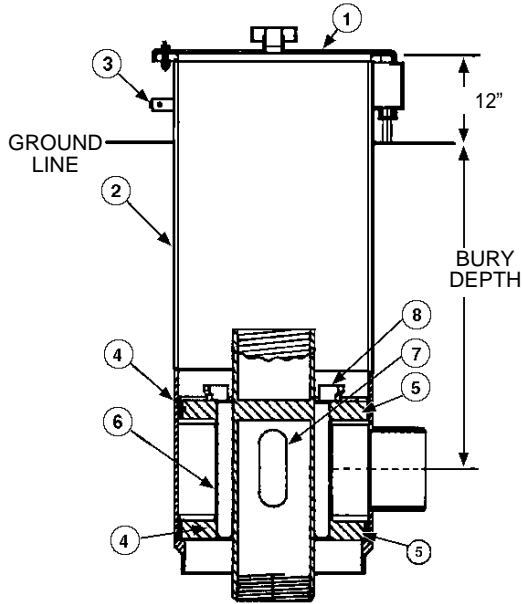
Specification #100-D

MANUFACTURERS OF QUALITY WATER WELL ACCESSORIES
©2004, MAASS Midwest Manufacturing, Inc. All rights reserved

MAASS MODEL MB PITLESS UNIT

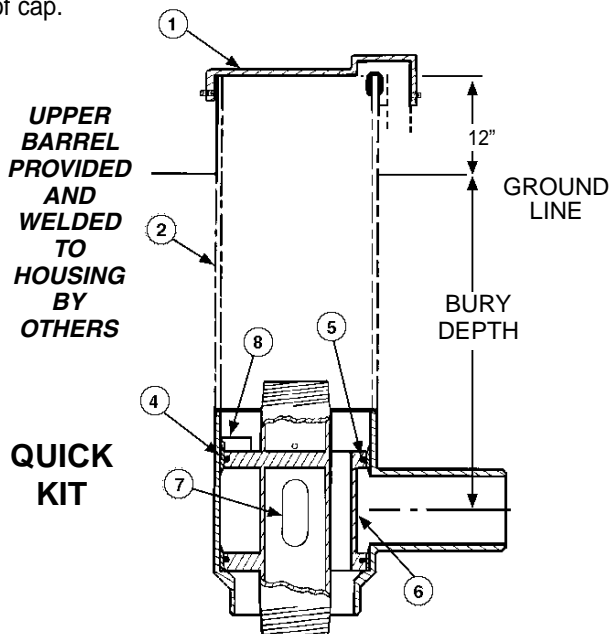
HEAVY DUTY (HD) MODEL MB PITLESS UNITS

The "HD" type unit is designed for high capacity pumps, deeper settings and turbine units. All MB units feature 304 stainless steel o-ring seats. "HD" type units are available for well casings from 8" through 24" and discharge diameters of 3" through 14". They include a vented water tight well cap and an electrical junction box. "HD" units have 1/2" or thicker housing. Spool pipe is "XS" or schedule 120.



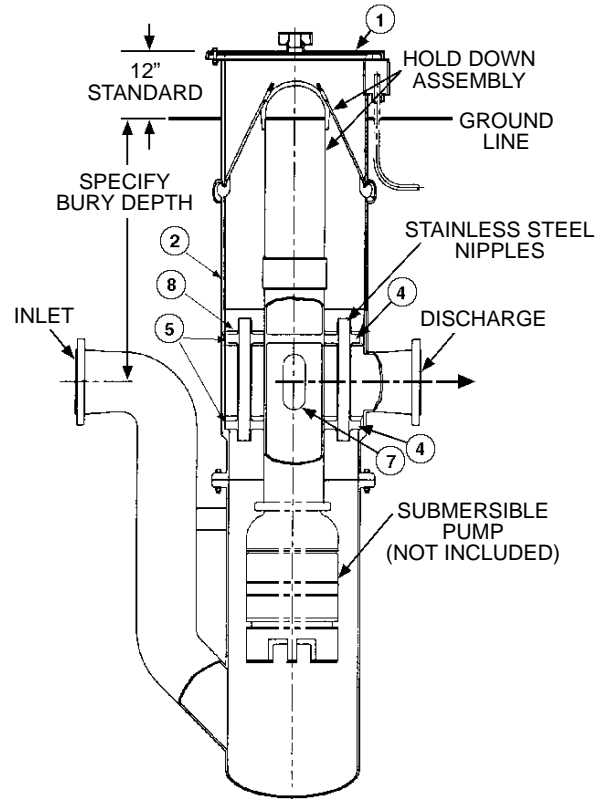
QUICK KIT MODEL MB PITLESS UNITS

Quick Kits for 8" and 10" well casing include spool, housing, and sealed vermin proof cast aluminum (AWT) cap. Upper barrel casing supplied by installer. Quick Kits may be ordered with cast aluminum submersible (AL) or sealed steel vermin proof (WT) cap. AWT and WT model caps have 2" NPT electrical conduit finishings as standard. Larger size MB Kits available with steel vermin-proof cap.



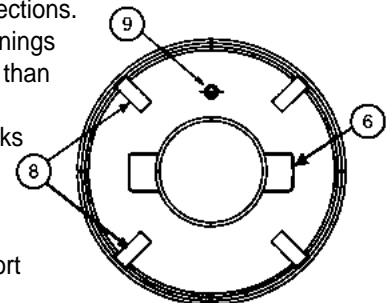
MODEL MB BOOSTER STATION (MB)

Maass-Midwest Booster Station units are ideal for applications where pressures need to be increased along a pipe line or where fluids must be circulated within a storage vessel. These units have the same features as the "HD" type units and are furnished complete with tank inlet and discharge pipes, hold-down clamps, lift-out bail, and sealed wire connections.



MODEL MB FEATURES

1. Well Cap
2. Upper Barrel (Optional)
3. Airline Test Block (Optional)
4. 304 Stainless Steel rings and seat to defeat rust, corrosion and electrolysis
5. O-Rings - 3/8" cross section
6. Large wire access channels through the spool. For flowing wells, replace with optional stainless steel tubes for sealed wire connections.
7. Spool discharge openings are 100% or greater than spool pipe used.
8. Spool centering Blocks prevent damage to O-Rings and seats when setting pump.
9. Hydrant Sampling Port (Optional)



TOP VIEW OF SPOOL

MODEL MB BOOSTER STATION (MB)

The following features may be included with the pitless adapters to meet specific application requirements and to facilitate pump installation and well monitoring.

AIR LINE TEST BLOCK (ATB)

A four-way tee fitting with 1/4" NPT female tapings. It is normally welded to the upper barrel - just under the well cap flange. It provides three taps for well monitoring. (Shown on "MB" unit on opposite page).

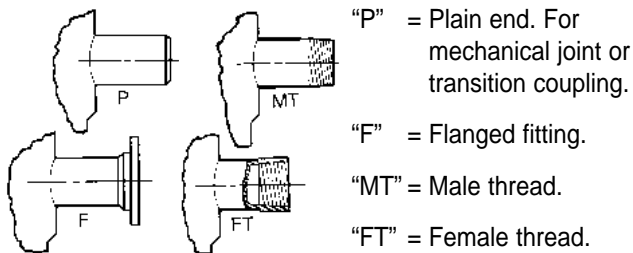
HYDRANT SAMPLING PORT (HYD)

A female threaded port is fitted to the top plate of the adapter spool. A line or hydrant can be attached to this port from which water samples can be collected. (See "Top View of Spool" on opposite page).

LOCKING BOLTS (LB)

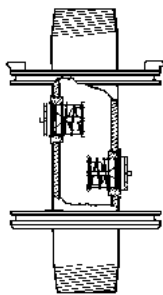
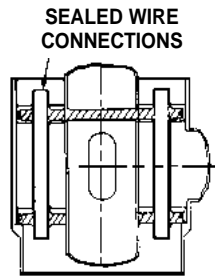
Two over size bolts are provided which permit padlocks to be attached thus securing the well cap. Note: Padlocks which are keyed alike are available from Maass Midwest. Ask for part number LJ2.

HOUSING DISCHARGE ENDS



SEALED WIRE CONNECTIONS (SWC)

Stainless steel nipples pass through both spool plates to provide access to the base of the well. In flowing (artesian) wells, the spool access channels are replaced with these pipes. By feeding the pump control cables through these pipes, the water from below can be sealed off. Specify the size and number of nipples required.

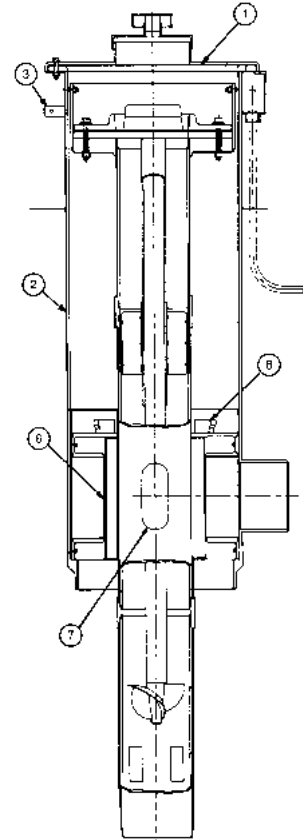


SPOOL CHECK VALVES (CVS)

Check valves replace the spool discharge openings in the spool. The valves are of stainless steel and brass construction for long, trouble-free service.

UPPER BARREL

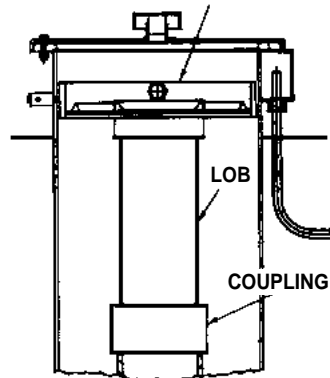
The upper barrel is made from standard well casing. When specified, this changes all units from a "kit" to a "bury unit". Note: Mass Midwest assumes a "stick-up" of 12" above grade on all MB units. If your application is different, adjust the bury depth specification accordingly. When supplied by the factory, the upper barrel is fitted to MB housing. The water tight well cap flange and other accessories are assembled to produce a complete unit. This saves installation time at the well site.



FLOW METER (FM)

All units can be furnished with an internal water meter. The Maass Midwest design features a water tight well cap with an access port for inspecting and reading the water meter. The water meter can be removed without disturbing the spool or pump. We recommend and use Water Specialties / Micrometer vertical upflow meters. Meter options available are: indicator (GPM), totalizer, transmitter and remote read-out.

TORQUE ARRESTOR



TORQUE ARRESTOR (TA)

For applications where pump torque may cause the pump and adapter spool to rotate within the well. The torque arrestor fits inside the upper barrel just below the electrical junction box and is attached to the top of the spool using a threaded coupling and a **LIFT-OUT BAIL (LOB)**. The lift-out bail facilitates setting of the pump. When the upper barrel is supplied by the factory, the lift-out bail and bail coupling are included with the torque arrestor.

ALL STAINLESS STEEL, ALL WETTED PARTS STAINLESS STEEL AND LINE SHAFT TURBINE PUMP ADAPTERS AVAILABLE UPON REQUEST



MANUFACTURERS OF QUALITY WATER WELL ACCESSORIES

P. O. Box 547, 11283 Dundee Road, Huntley, IL 60142-0547
 (800) 323-6259 • IL AREA (847) 669-5135 • FAX (847) 669-3230

MODEL MB PITLESS UNIT

The Model MB pitless unit can be supplied as a fully assembled "bury" unit or as a "kit". A kit consists of all components except the upper barrel. The upper barrel is purchased separately and assembled at the job site to reduce shipping costs.

Prices apply to basic Model MB Submersible Units having a butt-weld casing attachment and a plain end discharge.

	Bury Depth	Well Casing Diameter					
		8"	10"	12"	14"	16"	18" & up
Type "HD" Submersible Units with steel water tight cap, "WT"	Kit	\$2,177.70	\$3,685.60	\$3,909.00	\$5,992.00	\$7,325.00	Price Quoted Upon Request
	2'	2,441.25	3,286.60	4,245.00	6,939.40	8,675.00	
	3'	2,483.25	3,364.80	4,367.00	7,081.15	8,830.00	
	4'	2,525.25	3,445.00	4,489.00	7,222.90	8,985.00	
	5'	2,567.25	3,525.20	4,611.00	7,364.60	9,140.00	
	6'	2,609.25	3,605.40	4,733.00	7,506.40	9,395.00	
	7'	2,651.25	3,685.60	4,855.00	7,629.20	9,650.00	
		<i>Add \$42 / ft. for deeper bury depth</i>	<i>Add \$80.20 / ft. for deeper bury depth</i>	<i>Add \$122 / ft. for deeper bury depth</i>	<i>Add \$141.80 / ft. for deeper bury depth</i>	<i>Add \$255 / ft. for deeper bury depth</i>	
Quick Kit Type "HD" with cast aluminum water tight cap "AWT"		\$2,038.00	\$2,708.00	Not Available	Not Available	Not Available	Not Available
Pump & Discharge Pipe Sizes	Standard	4"	6"	6"	6"	6"	6"
	Optional	3", 5"	3", 4", 5"	4", 5"	4", 5", 8"	5", 8", 10"	8", 10", 12", 14"

EXAMPLE OF ADAPTER SPECIFICATION

MB, HD, S -10, 12 - 6, P - 6, NPT - WT - 5 - ATB

- * Estimated list price for Standard Heavy Duty Unit
- Meets: Minnesota State Standards
New York State Standards
Great Lakes Upper Mississippi River Board of Sanitary Engineers Standards
- ** A steel water tight well cap (WT) is optional on Quick Kits.
For 8" wells, add \$324.00.
For 10" wells, add \$427.00.
Submersible cast aluminum cap (AL) is also available.
For 8" wells, deduct \$95.00.
For 10" wells, deduct \$160.00.
Cast Aluminum Watertight Cap (AWT) for 8" and 10" well has 2" NPT electrical opening.

All prices are quoted U.S. funds, F.O.B., Huntley, Illinois, U.S.A. Call or write for specifications, prices and delivery on options, custom features, Booster Stations and Turbine pump units. Other sizes not listed can be fabricated. FDA and NSF approved epoxy coating is standard. Special coatings and materials are available. Contact the factory with your requirements.

— ALL STAINLESS STEEL, ALL WETTED PARTS —

STAINLESS STEEL AND LINE SHAFT TURBINE PUMP ADAPTERS AVAILABLE ON REQUEST

Type: HD = Heavy Duty.	Style: S = Submersible. B = Booster Station. T = Turbine.	Well Casing Diameter: (Specify 8" - 26").	Upper Barrel diameter: (2" larger than well casing is standard).	Discharge Diameter: (See price list for sizes available).	Discharge Type: P = Plain End. F = Flanged End. MT = Male Thread. FT = Female Thread.	Spool Pipe Diameter: (3" - 12").	Spool Pipe End: NPT = Threaded. F = Flanged, lower end. APIR = API Round Threads.	Well Cap: WT = Steel Water tight. AL = Aluminum Submersible. AWT = Aluminum Water tight	Bury Depth: (Feet) - If upper barrel is supplied. ("O" if kit).	Options: See description of options. Include all that are required.
MODEL NUMBER ORDERING GUIDE										

OPTIONS

ATBAirline Test Block	HYD ..Hydrant Sampling Port
CVSCheck Valves in Spool	LBLocking Bolts
SWC ...Sealed Wire Connections	LOB ..Lift-out Bail
FMFlow Meter	TATorque Arrestor

Prices and specifications subject to change without notice.

PATENTED # 4,298,065; 4,416,328; 4,531,664

March 31, 2003



MANUFACTURERS OF QUALITY WATER WELL ACCESSORIES

P. O. Box 547, 11283 Dundee Road, Huntley, IL 60142-0547
(800) 323-6259 • IL AREA (847) 669-5135 • FAX (847) 669-3230

March 31, 2003